



WELLSTE MATERIAL CO.,LTD | BIGLE GROUP

Office :# 98 Zongze,Jingkou Rd.,District,Jiangyin,Jiangsu,China

Tel: 0511-83995516

Email: Anna@wellste.com

Factory: :#86 Huanxi Road, Zhutang,Jiangyin,Jiangsu,China

Tel: (0510) 8639 5837

WELLSTE Aluminum | Bigle GROUP

Specialized in Customize Aluminum Extrusion Profile since 1996

About US / 关于我们



Wellste Aluminum mainly supply in architectural and engineering industries, for example, standard structural extruded aluminum profiles, aluminium tubing, aluminum window door profiles, façade & curtain wall profiles, LED Aluminium heat sink profiles, and PV solar mounting structural systems, various aluminum frame etc.

Wellste production lines include

- * 3 Aluminum Casting production line
- * 36 extrusion lines from 660T to 3600T
- * 5 anodizing & electrophoresis production lines
- * 5 powder coating production lines
- * 1 fluorocarbon coating production lines
- * 1 wooden finish production line

Wellste Aluminum is an subsidiary of Bigle Group that focus on aluminum extrusion profiles manufacturer, Integrates research, design, production, and marketing of standard and custom aluminium extrusions and aluminum Profiles.

As one of leading extruded aluminum profiles manufacturer, Wellste owns large production capacity to meet your highly demand order quantities and in-time delivery speed.

Wellste completes the whole producing process from extrusion to delivery under one roof. Offers comprehensive solutions in design and engineering, extrusion, surface finishes and on time delivery.

With annual production capacity 100,000 tons, and certified with ISO9001, ISO14001, CE and SGS that customers can be assured with reliable and quality.



Over 20 years of experience in aluminium extrusion industry allow us to accurately analysis product drawing and calmly deal with all kinds of problem that occur during production, Thus we can guarantee the quality of the product and ensure a high level of customer satisfaction.

Thank you for choosing us as your manufacturer partner. We are looking forward to working with you in the field of aluminum profiles.



公司质量证书 & 荣誉证书 Certificate & Honor

Wellste certified with ISO9001,
ISO14001, that customers can
be assured with reliable and quality.

公司质量证书 & 荣誉证书 Certificate & Honor

Wellste products also passed ISO, SGS, ROHS, MSDS,
MTC ect Certifications, guarantee the quality of each product.

CERTIFICATE
Environmental management system
Certification certificate
Certificate No.: 10202105317468
This is to certify that
Wellste Material Co Ltd.
Unified social credit code: 91331024MA283M417K
ADD.: 18 Zengze Road, Jiaxing District, Zhejiang City
Management system in line with
GB/T 24001-2016/ISO 14001:2015
(Requirements and guidance for environmental management system)
Covered products and processes:
Production, sale and design extruding aluminum profiles, aluminum parts, aluminum
Fabrication services, Electronics, Heat sinks, photovoltaic.
Effective date: May 31, 2021 Valid until: May 30, 2026

CERTIFICATE
QUALITY MANAGEMENT SYSTEM
CERTIFICATION
Certificate No.: 102021053105457
This is to certify that
Wellste Material Co Ltd.
Unified social credit code: 91331024MA283M417K
ADD.: 18 Zengze Road, Jiaxing District, Zhejiang City
Management system in line with
GB/T 19001-2016/ISO 9001:2015
The requirements of (Quality management system)
Covered products and processes:
Production, sale and design extruding aluminum profiles, aluminum parts, aluminum
Fabrication services, Electronics, Heat sinks, photovoltaic.
Effective date: May 31, 2021 Valid until: May 30, 2026

CERTIFICATE
Occupational health and safety management system
Certification Certificate
Certificate No.: 102021053117436
This is to certify that
Wellste Material Co Ltd.
Unified social credit code: 91331024MA283M417K
ADD.: 18 Zengze Road, Jiaxing District, Zhejiang City
Management system in line with
GB/T 28001-2011/OHSAS 18001:2007
(Occupational health and safety management system)
Covered products and processes:
Production, sale and design extruding aluminum profiles, aluminum parts, aluminum
Fabrication services, Electronics, Heat sinks, photovoltaic.
Effective date: May 31, 2021 Valid until: May 30, 2026

TEST REPORT
No. 10178-0194
Page: 1 of 2
CUSTOMER NAME: WELLSTE MATERIAL CO., LTD.
ADDRESS: 18, ZENGZE ROAD, JIAXING DISTRICT, ZHEJIANG PROVINCE, CHINA

TEST REPORT
No. 10178-0195
Page: 1 of 2
TEST ITEM: Tensile strength, Elongation at break, Yield strength, Hardness

TEST REPORT
No. 10178-0196
Page: 1 of 2
TEST ITEM: Tensile strength, Elongation at break, Yield strength, Hardness

TEST REPORT
No. 10178-0197
Page: 1 of 2
TEST ITEM: Tensile strength, Elongation at break, Yield strength, Hardness

TEST REPORT
No. 10178-0198
Page: 1 of 2
TEST ITEM: Tensile strength, Elongation at break, Yield strength, Hardness

TEST REPORT
No. 10178-0199
Page: 1 of 2
TEST ITEM: Tensile strength, Elongation at break, Yield strength, Hardness

TEST REPORT
No. 10178-0200
Page: 1 of 2
TEST ITEM: Tensile strength, Elongation at break, Yield strength, Hardness

TEST REPORT
No. 10178-0201
Page: 1 of 2
TEST ITEM: Tensile strength, Elongation at break, Yield strength, Hardness

TEST REPORT
No. 10178-0202
Page: 1 of 2
TEST ITEM: Tensile strength, Elongation at break, Yield strength, Hardness

TEST REPORT
No. 10178-0203
Page: 1 of 2
TEST ITEM: Tensile strength, Elongation at break, Yield strength, Hardness

TEST REPORT
No. 10178-0204
Page: 1 of 2
TEST ITEM: Tensile strength, Elongation at break, Yield strength, Hardness

TEST REPORT
No. 10178-0205
Page: 1 of 2
TEST ITEM: Tensile strength, Elongation at break, Yield strength, Hardness

WIR
Certificate of Registration
GB/T 24001-2016/ISO 14001:2015

WIR
Certificate of Registration
GB/T 19001-2016/ISO 9001:2015

TUV NORD
CERTIFICATE
OF CONFORMITY OF THE FACTORY PRODUCTION CONTROL
9000-CPN-2200

nada
Certificate of Registration
江苏百利有色金属工业科技有限公司

公司设备-挤压机型
Production Equipment

Melting Furnace



Tooling Design & develop

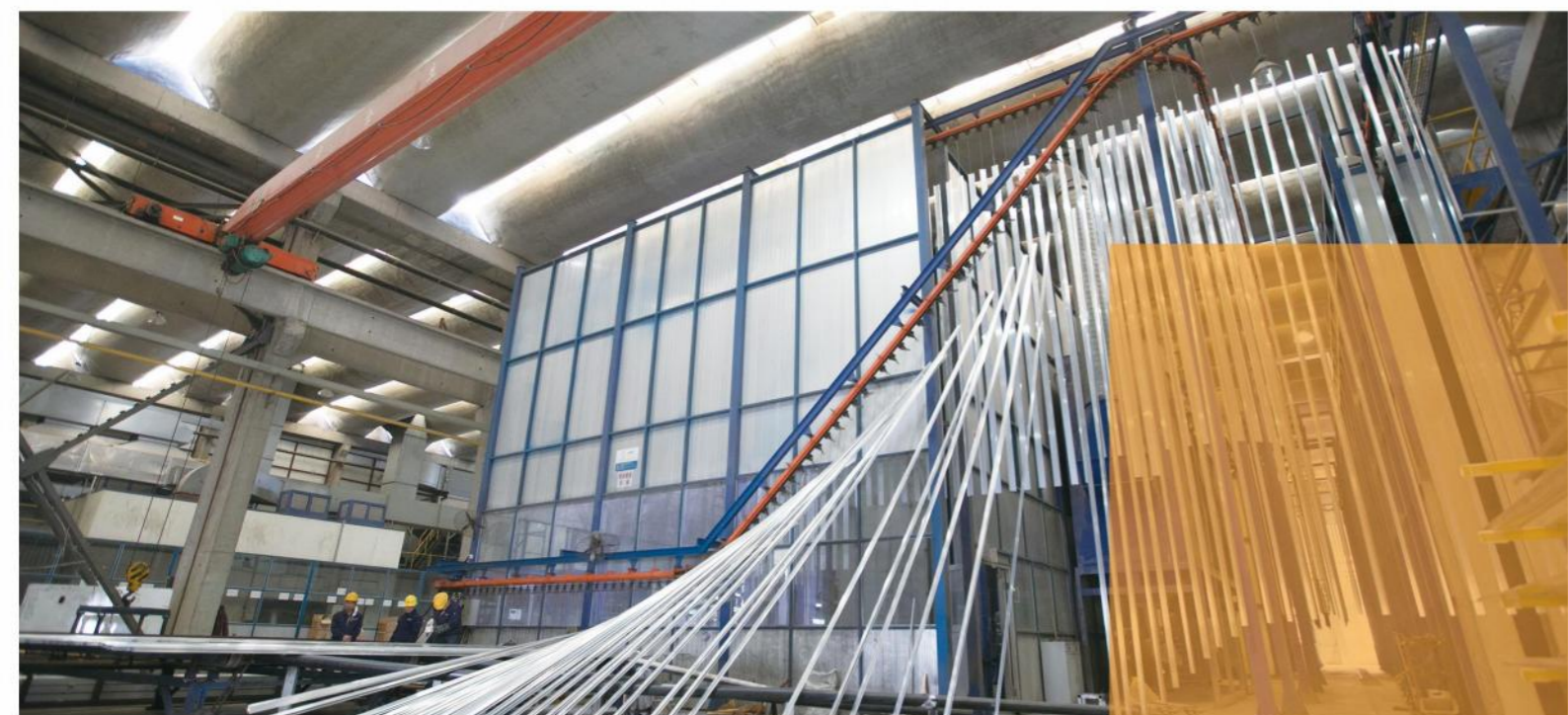
2,000 sets of Tooling for Standard Shapes save your tooling cost



800-4000MT Extruder



Aging Furnace



● 表面处理 -PVDF

公司设备 表面处理

- 5 advanced German anodized lines
- 2 advanced electrophoresis production lines
- 4 horizontal powder coating lines
- 1 vertical powder coating lines



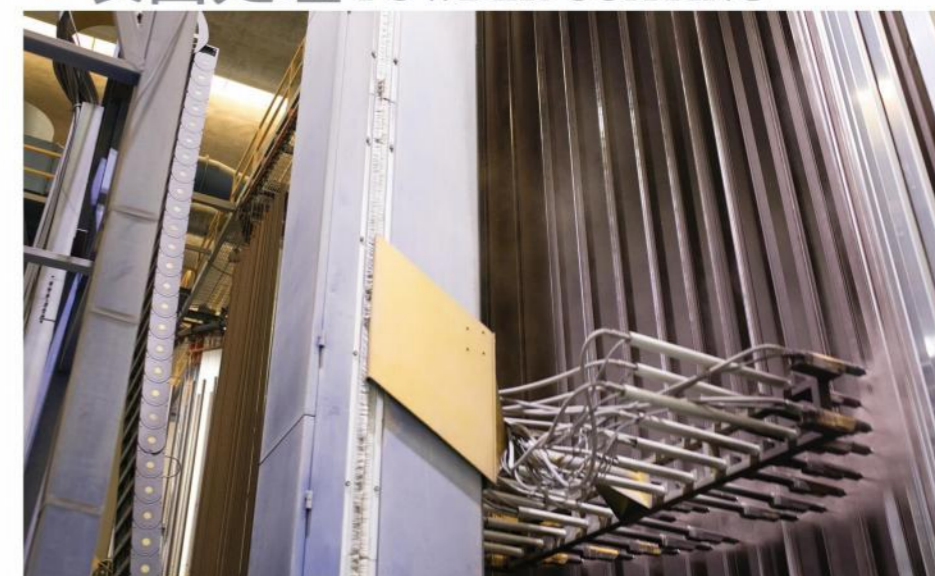
● 表面处理 -ANODIZED



● 表面处理 -ANODIZED



● 表面处理-POWDER COATING

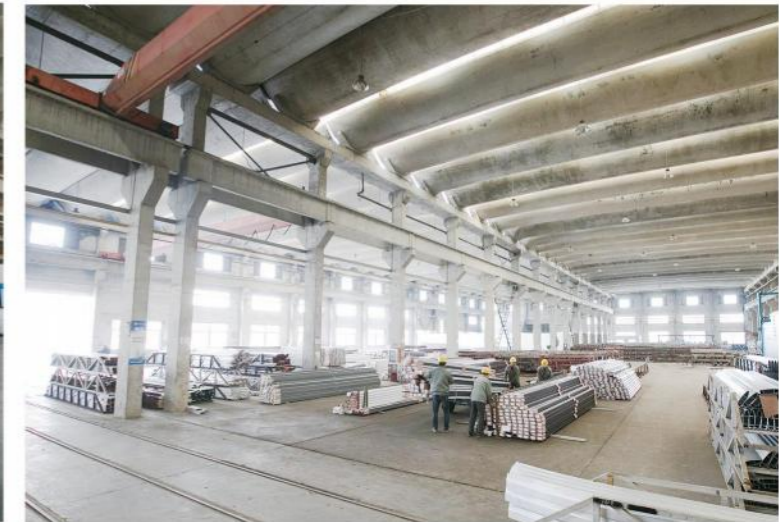


● 表面处理-POWDER COATING

车间
workshop



喷砂机
Sandy blasting equipment



- ① CNC workshop
- ② 50 CNC Machines
- ③ 5 Cutting Machines

Wellste has Advance imported Production equipment
Mosty Wellste production equipment are imported from Germany, Japan, and Taiwan.



一站式
深加工服务
One stop deep
processing service

Wellste completes the whole producing process from extrusion to delivery under one roof. We offer comprehensive solutions in design and engineering, extrusion, surface finishes and on time delivery.

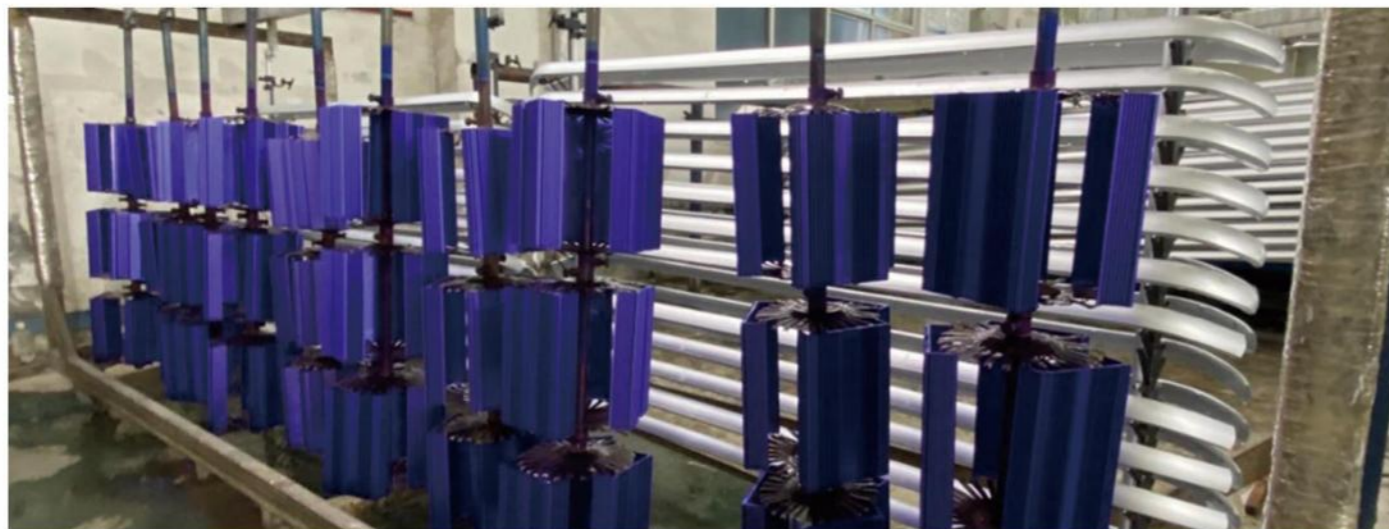
小喷涂 - Short Piece Powder Coating



冲压 - Punching



焊接 - Welding



小氧化 - Short Piece Anodizing



切割 - Cutting



组装 - Assembling

质量控制-检测设备

Quality control -
testing equipment



拉力试验机
Mechanical Testing

性能检验 Performance inspection



材质检验 Material inspection



金相电子显微镜
Electron Microscope



直读光谱仪
Direct Reading Spectrograph

尺寸检验 Dimensional inspection



型材截面扫描仪
Profile Section Scanner



三坐标测量仪
CMM Coordinate Measuring Machine

硬度检验 Hardness test



巴氏硬度计
Barcol Impressor



韦氏硬度计
Wechsler Hardness



洛氏硬度计
Rockwell Hardness Tester



布氏硬度计
Brinell Hardness Tester

表面检验 Surface inspection



紫外线老化试验机
Ultraviolet Aging Tester



色差检测仪
Color difference detector



粗糙度检测仪
Roughness tester



盐雾试验机
Salt spray tester



光泽度检测仪
Gloss tester

产品品类

Product category



Aluminum Cylinder Tube:

Wellste Aluminum Cylinder Tube is made of 6063 T5.

- *Tight Tolerance from H9 to H11
- *Anodizing film thickness: 12-15 μ m
- *Surface Treatment: Outer Matt sandy Anodizing / Inner Hard Anodizing
- *Inner Surface Roughness: Ra max radial 0.6 μ m
- *100 kinds of Standard Molds for Saving Your Initial Cost

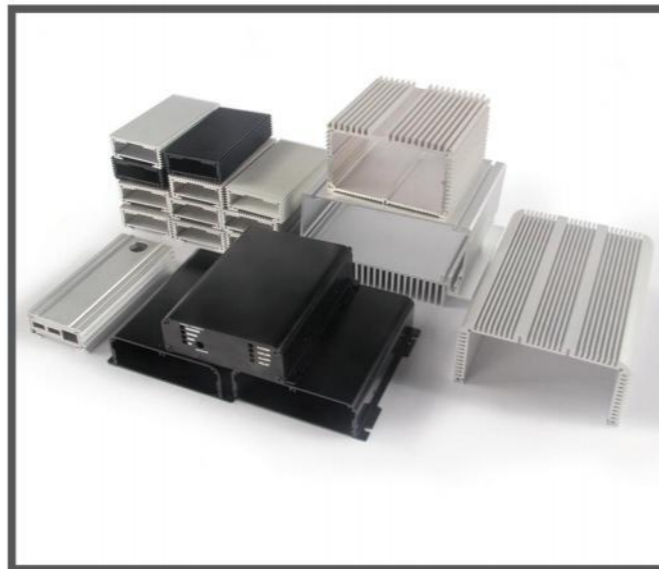
They are suitable for Automobile, Electric Power, Pneumatic Hydraulic, etc

Aluminum Enclosure:

Wellste Enclosure Surface is Sandblasting, Anodized, Screen Printing, Laser Printing OR Customize.

- *Corrosion Resistance & Decorative Performance
- *Large Stock Standard Enclosure
- *More than 200 kinds of Existed Molds
- *Surface Treatment: Support Customize Color and Shapes

The Enclosure are widely used in Instruments, Electric Power, PCB, .etc.



Aluminum Heat Sink:

Wellste Aluminum Heat Sinks is Made By 6063.

Support Cutting, Punching, Drilling, Tapping, Milling, Bending, Welding, CNC etc.

- *Extruded Heat Sinks
- *Bonded Heat Sinks
- *Skived Heat Sinks
- *Other Kinds of Heat Sinks

They are used in LED light , Automation, Industry with a good heat dissipation.

Tslot:

Wellste Tslot Profiles are made by 6063-T5, the High Corrosion Resistance is most suit for Structural Frame, Workbench and so on.

- *Large Stock Standard Profiles
- *100+ kinds of Existed Molds
- *Favorable Price for T-slot Accessories
- *Your One-stop T-Slot Profile Solution Provider

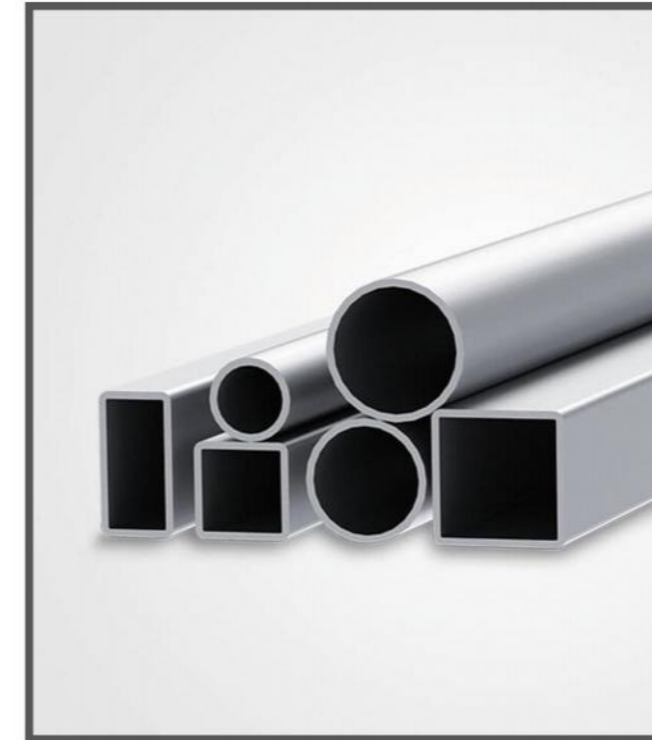




Window and Door Profile:

Wellste's Window and Door Profile made by Aluminum 6063-T5, It has good corrosion resistance, good weldability, good cold workability, It will used in these field.

- * Aluminum Window/Door
- * Curtain Walls & Facades
- * Aluminum Formworks



Aluminum Tube:

Wellste's Aluminum Tube made by Aluminum 1000-7000 series

- * Stable Spec & Accurate Dimension
- * Support Customize
- * Standard Size with Low MOQ
- * Bending, Drill Hole and Stamping and Thread .etc

Aluminum Telescopic Poles:

Wellste Aluminum Telescopic Poles made by Aluminum 6063-T5, Our advantage is that we can make different lock type to suit the tube sizes.

- * Flip Lock
- * Twist Lock
- * Spin Lock
- * Antenna Lock
- * Straight pull Lock
- * Other Lock Types

They are mainly used in Outdoor, House Cleaning, Luggage Pole, Tent Equipments . ect. we can do Ground, Bent, Slotted, Punched Process.



Custom Aluminum Extrusion:

We are Custom Aluminum Extrusion Manufacturer

- * Low MOQ request with Competitive Price
- * Free design and Free samples
- * Advanced Fabricating equipment with manual and automatic way
- * CNC, bending, welding, laser engraving, cutting & drilling
- * Skilled workers keep stable quality & Lead time



Any Customize Shapes from your Thoughts