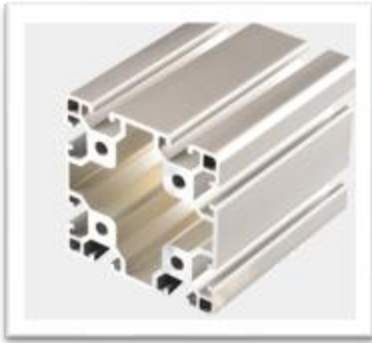




## T Slot Aluminum Extrusion Frame Supplier



## 80 Series T-Slot Aluminum Extrusion Profile



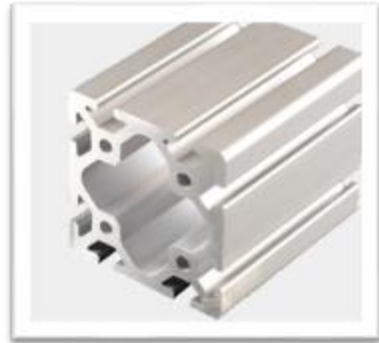
W-8-8080



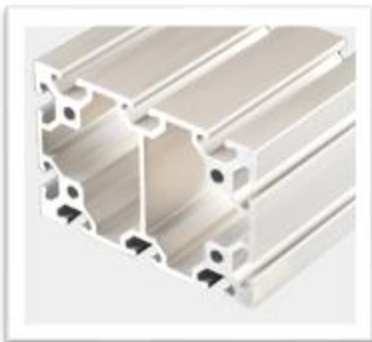
W-8-8080A



W-8-8080L



W-8-8080W



W-8-80120



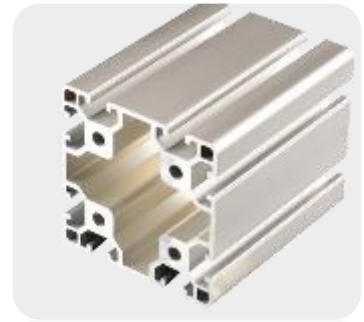
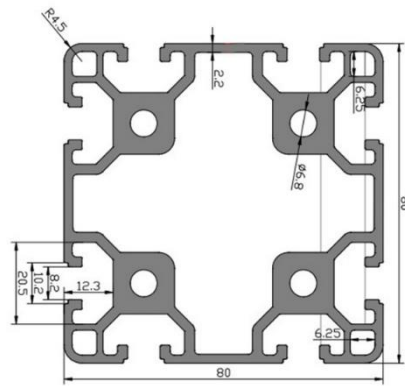
W-10-80160



W-8-80160A

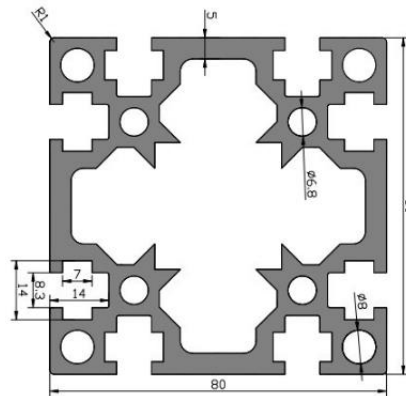
## W-8-8080

Profile: 80x80  
 Material Aluminium (6063-T5)  
 Weight: 5.8kg/m  
 Length: 6.01m  
 Mass of Inertia: Ix: 130.10cm<sup>4</sup> Iy: 130.10cm<sup>4</sup>  
 Section Modulus: Zx: 32.10cm<sup>3</sup> Zy: 32.10cm<sup>3</sup>



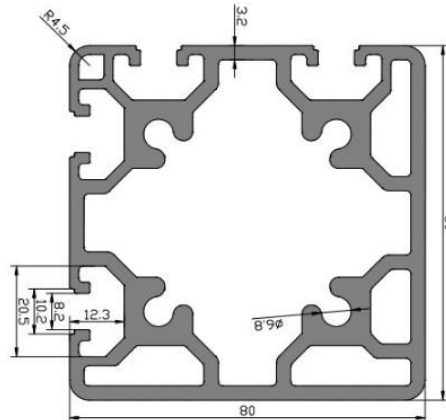
## W-8-8080A

Profile: 80x80A  
 Material Aluminium (6063-T5)  
 Weight: 6.5kg/m  
 Length: 6.01m  
 Mass of Inertia: Ix: 150.30cm<sup>4</sup> Iy: 42.80cm<sup>4</sup>  
 Section Modulus: Zx: 32.20cm<sup>3</sup> Zy: 16.60cm<sup>3</sup>



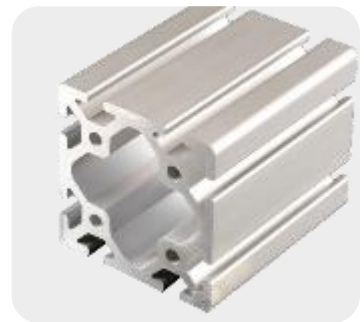
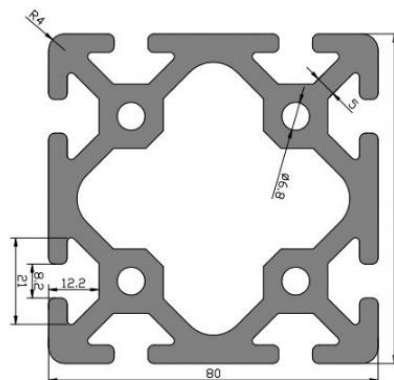
## W-8-8080L

Profile: 80x80L  
 Material Aluminium (6063-T5)  
 Weight: 6.3kg/m  
 Length: 6.01m  
 Mass of Inertia: Ix: 140.33cm<sup>4</sup> Iy: 138.11cm<sup>4</sup>  
 Section Modulus: Zx: 35.08cm<sup>3</sup> Zy: 34.53cm<sup>3</sup>



## W-8-8080W

Profile: 80x80W  
 Material Aluminium (6063-T5)  
 Weight: 8.4kg/m  
 Length: 6.01m  
 Mass of Inertia: Ix: 130.10cm<sup>4</sup> Iy: 130.10cm<sup>4</sup>  
 Section Modulus: Zx: 32.10cm<sup>3</sup> Zy: 32.10cm<sup>3</sup>





## Chemical Composition

Alloy	Si	Fe	Cu	Mn	Mg	Cr	Zn	Ti	Other	
									Single	Total
6063	0.20~0.60	≤0.35	≤0.10	≤0.10	0.45~0.90	≤0.10	≤0.10	≤0.10	≤0.05	≤0.15
6063A	0.30~0.60	0.15~0.35	≤0.10	≤0.15	0.60~0.90	≤0.05	≤0.15	≤0.10	≤0.05	≤0.15
6061	0.40~0.80	0.7	0.15~0.40	≤0.15	0.80~1.20	0.04~0.35	0.25	0.15	0.05	0.15
6082	0.70~1.30	0.5	0.1	0.4~1.0	0.6~1.2	0.25	0.2	0.1	0.05	0.15

## Main Performance

Item			Unit	Performance Data				
Alloy and State				6063T5	6063T6	6063AT5	6061T6	6082T6
Tensile strength			Mp	160	205	200	265	310
Non proportional			Mp	110	180	160	245	260
Elongation			%	8	8	5	8	10
Hardness( Vickers)			HW	8	/	10	/	/
Anodizing	Oxide film	Grade	μm	Average film thickness		Local film thickness		
		AA10		≥10	≥8			
		AA15		≥15	≥12			
		AA20		≥20	≥16			
		AA25		≥25	≥20			
Closure quality		Mg/dm <sup>2</sup>	30					
electrophoresis	composite membrane	A	μm	≥21				
		B		≥16				
	Film Hardness		H	≥2				
adhesion			0					
Powder spraying	Coating thickness		μm	Max film thickness ≤120		Min film thickness ≥40		
	Indentation hardness			≥80				
	adhesion			0				