



T Slot Aluminum Extrusion Frame Supplier



40 Series T-Slot Aluminum Extrusion Profile



W-10-4040



W-8-4040A



W-8-4040B



W-8-4040C



W-8-4040D



W-8-4040E



W-8-4040F



W-6-4040G



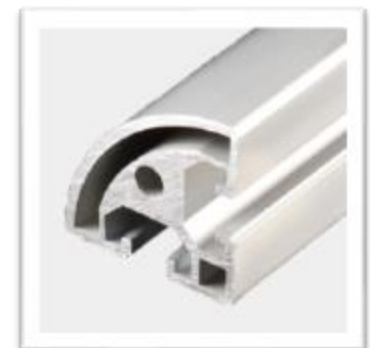
W-8-4040H



W-8-4040K



W-8-4040L



W-8-4040R



W-8-4040V



W-8-4040HA



W-8-4040HB



W-8-4040HC



W-8-4040HD



W-8-4040HE



W-8-4040HF



W-8-4040HG



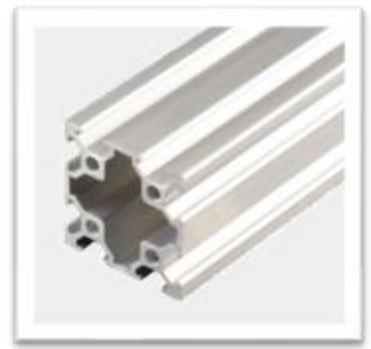
W-8-4040HJ



W-8-4040HP



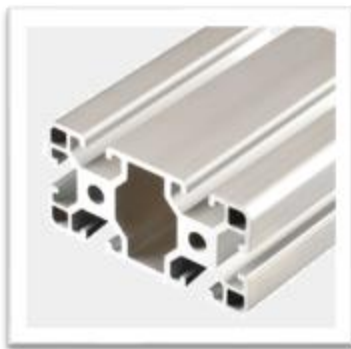
W-8-4040HR



W-6-4040GA



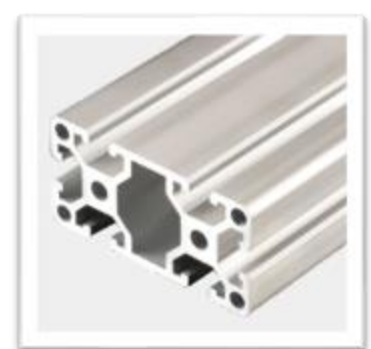
W-8-4060



W-8-4080



W-8-4080C



W-8-4080D



W-8-4080DR



W-8-4080H



W-8-4080HD



W-8-4080HE



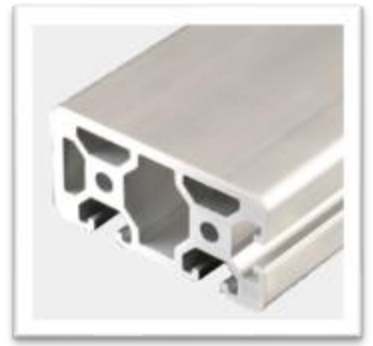
W-8-4080K



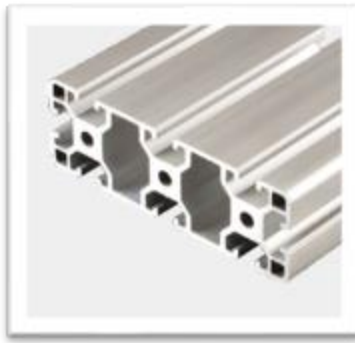
W-8-4080L



W-8-4080P



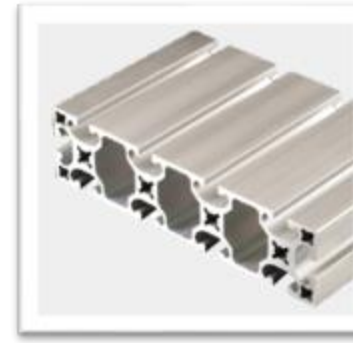
W-8-4080Q



W-8-40120



W-8-40160



W-8-40160G

W-10-4040

Profile: 40x40

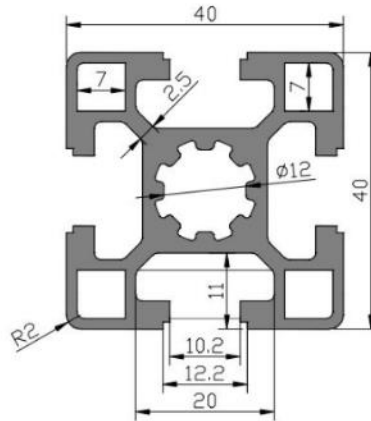
Material Aluminium (6063-T5)

Weight: 1,8kg/m

Length: 6.01m

Mass of Inertia: Ix: 8.57cm⁴ Iy: 8.57cm⁴

Section Modulus: Zx: 4.29cm³ Zy: 4.29cm³



W-8-4040A

Profile: 40x40A

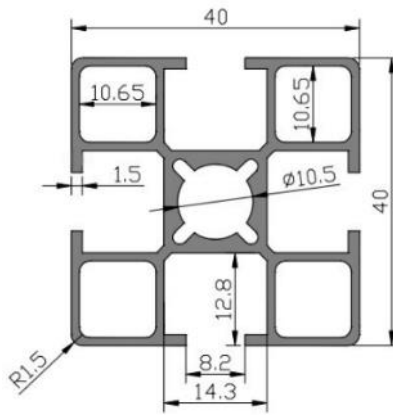
Material Aluminium (6063-T5)

Weight: 1.3kg/m

Length: 6.01m

Mass of Inertia: Ix: 9.70cm⁴ Iy: 9.70cm⁴

Section Modulus: Zx: 5.10cm³ Zy: 5.10cm³



W-8-4040B

Profile: 40x40B

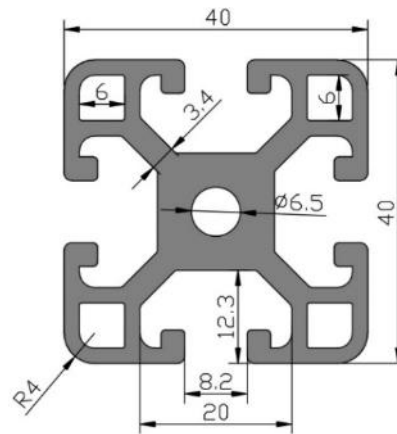
Material Aluminium (6063-T5)

Weight: 1.95kg/m

Length: 6.01m

Mass of Inertia: Ix: 9.70cm⁴ Iy: 9.70cm⁴

Section Modulus: Zx: 5.10cm³ Zy: 5.10cm³



W-8-4040C

Profile: 40x40C

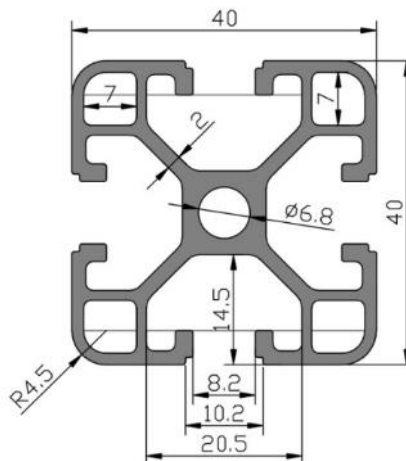
Material Aluminium (6063-T5)

Weight: 1.55kg/m

Length: 6.01m

Mass of Inertia: Ix: 9.25cm⁴ Iy: 9.25cm⁴

Section Modulus: Zx: 4.86cm³ Zy: 4.86cm³



W-8-4040H

Profile: 40x40H

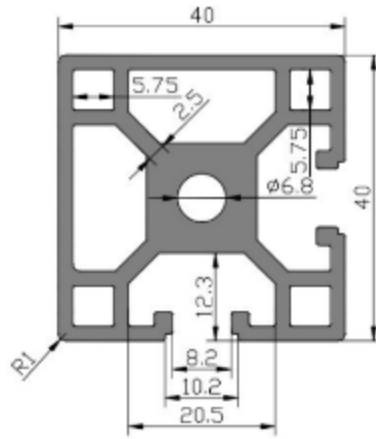
Material Aluminium (6063-T5)

Weight: 2.1kg/m

Length: 6.01m

Mass of Inertia: Ix: 9.25cm⁴ Iy: 9.25cm⁴

Section Modulus: Zx: 4.86cm³ Zy: 4.86cm³



W-8-4040K

Profile: 40x40K

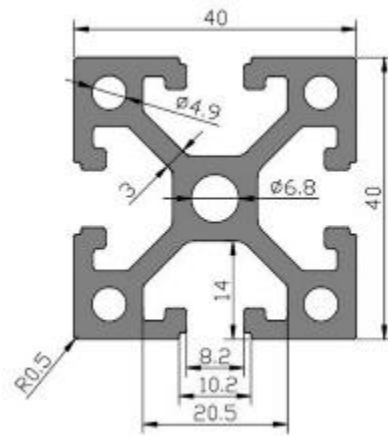
Material Aluminium (6063-T5)

Weight: 2.2kg/m

Length: 6.01m

Mass of Inertia: Ix: 10.20cm⁴ Iy: 10.20cm⁴

Section Modulus Zx: 5.32cm³ Zy: 5.32cm³



W-8-4040L

Profile: 40x40L

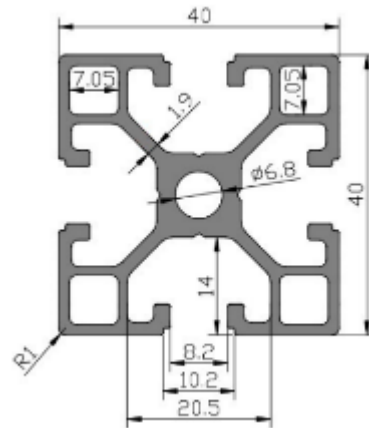
Material Aluminium (6063-T5)

Weight: 1.66kg/m

Length: 6.01m

Mass of Inertia: Ix: 9.70cm⁴ Iy: 9.70cm⁴

Section Modulus: Zx: 5.10cm³ Zy: 5.10cm³



W-8-4040R

Profile: 40x40R

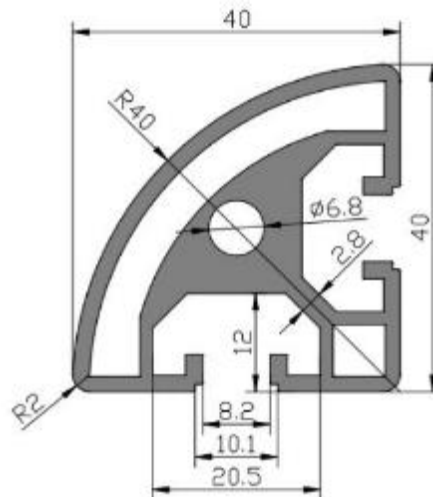
Material Aluminium (6063-T5)

Weight: 1.75kg/m

Length: 6.01m

Mass of Inertia: Ix: 6.15cm⁴ Iy: 6.15cm⁴

Section Modulus: Zx: 2.84cm³ Zy: 2.84cm³



W-8-4040V

Profile: 40 x40V

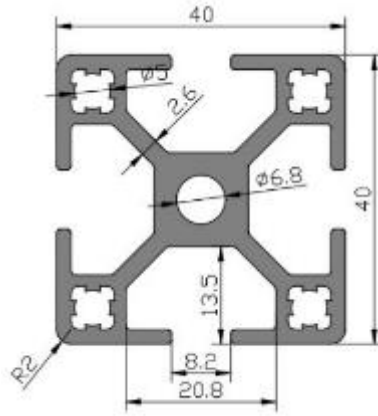
Material Aluminium (6063-T5)

Weight:1.8kg/m

Length: 6.01m

Mass of Inertia: Ix: 8.71cm⁴ Iy:8.70cm⁴

Section Modulus: Zx:4.36cm³ Zy:4.35cm³



W-8-4040HA

Profile: 40 x40HA

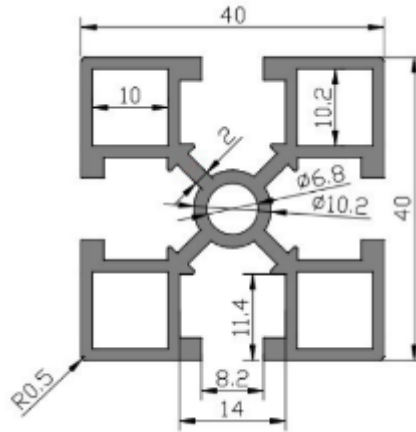
Material Aluminium (6063-T5)

Weight:1.65kg/m

Length: 6.01m

Mass of Inertia: Ix: 10.20cm⁴ Iy: 10.20cm⁴

Section Modulus Zx: 5.32cm³ Zy: 5.32cm³



W-8-4040HB

Profile: 40 x40HB

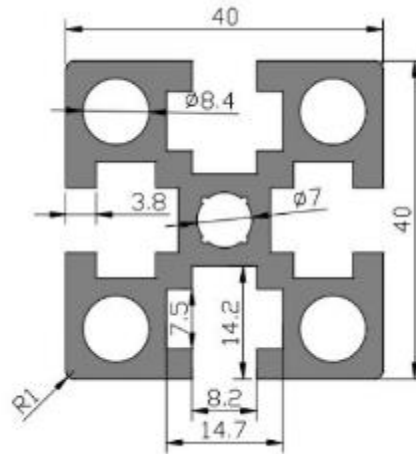
Material Aluminium (6063-T5)

Weight:2.4kg/m

Length: 6.01m

Mass of Inertia: Ix: 9.70cm⁴ Iy: 9.70cm⁴

Section Modulus: Zx: 5.10cm³ Zy: 5.10cm³



W-8-4040HC

Profile: 40 x40HC

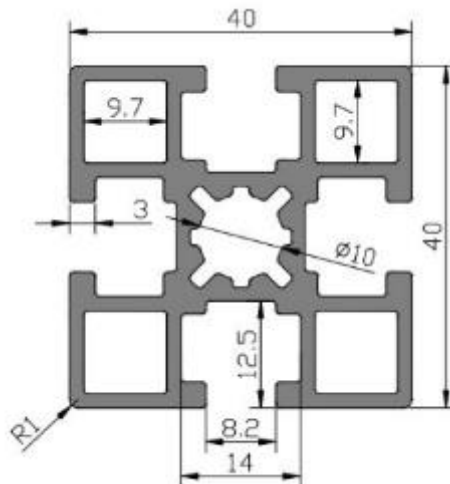
Material Aluminium (6063-T5)

Weight:1.65kg/m

Length: 6.01m

Mass of Inertia: Ix: 9.62cm⁴ Iy: 9.62cm⁴

Section Modulus: Zx: 4.95cm³ Zy: 4.95cm³



W-8-4040HD

Profile: 40 x40HD

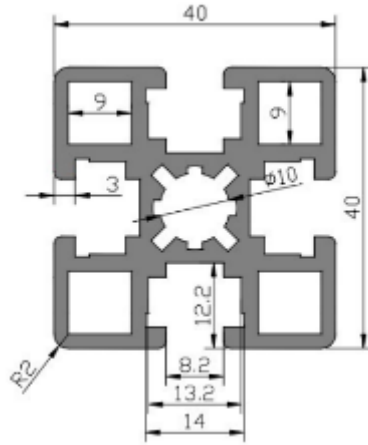
Material Aluminium (6063-T5)

Weight:2.03kg/m

Length: 6.01m

Mass of Inertia: Ix: 9.70cm⁴ Iy: 9.70cm⁴

Section Modulus: Zx: 5.10cm³ Zy: 5.10cm³



W-8-4040HE

Profile: 40 x40HE

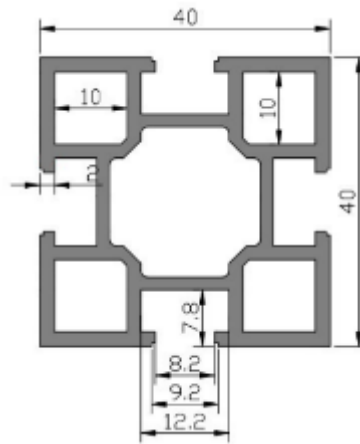
Material Aluminium (6063-T5)

Weight:1.6kg/m

Length: 6.01m

Mass of Inertia: Ix:8.39cm⁴ Iy:8.39cm⁴

Section Modulus: Zx:4.20cm³ Zy:4.20cm³



W-8-4040HF

Profile: 40 x40HF

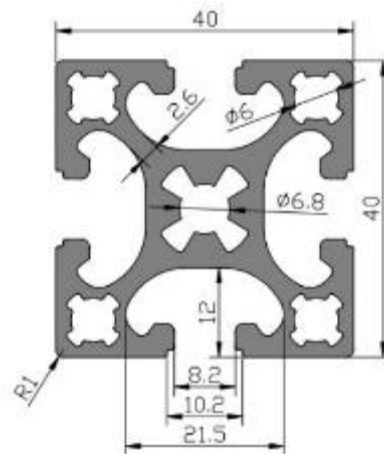
Material Aluminium (6063-T5)

Weight:2.1kg/m

Length: 6.01m

Mass of Inertia: Ix:9.60cm⁴ Iy:9.60cm⁴

Section Modulus: Zx:4.80cm³ Zy:4.80cm³



W-8-4040HG

Profile: 40 x40HG

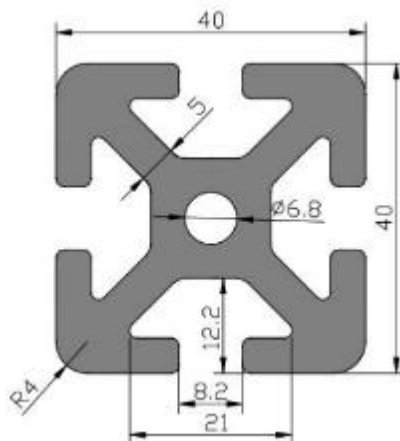
Material Aluminium (6063-T5)

Weight:3kg/m

Length: 6.01m

Mass of Inertia: Ix:14.01cm⁴ Iy:14.01cm⁴

Section Modulus: Zx:7.01cm³ Zy:7.01cm³



W-8-4040HJ

Profile: 40 x40HJ

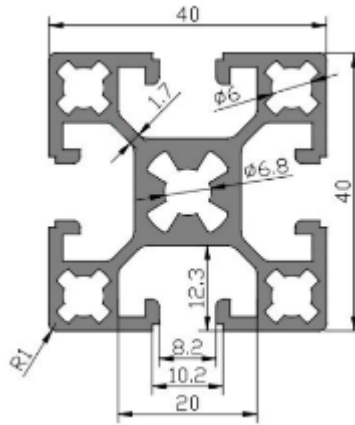
Material Aluminium (6063-T5)

Weight:1.71kg/m

Length: 6.01m

Mass of Inertia: lx:9.31cm⁴ ly:8.31cm⁴

Section Modulus: Zx:4.20cm³ Zy:4.20cm³



W-8-4040HP

Profile: 40 x40HP

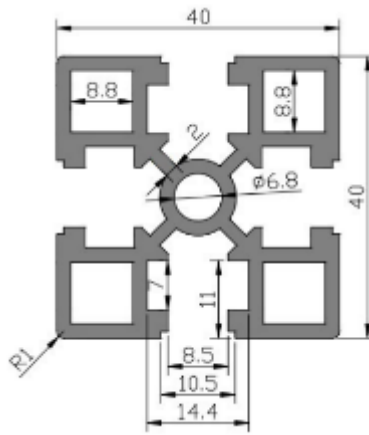
Material Aluminium (6063-T5)

Weight:1.9kg/m

Length: 6.01m

Mass of Inertia: lx:9.66cm⁴ ly:9.64cm⁴

Section Modulus: Zx:4.83cm³ Zy:4.82cm³



W-8-4040HR

Profile: 40 x40HR

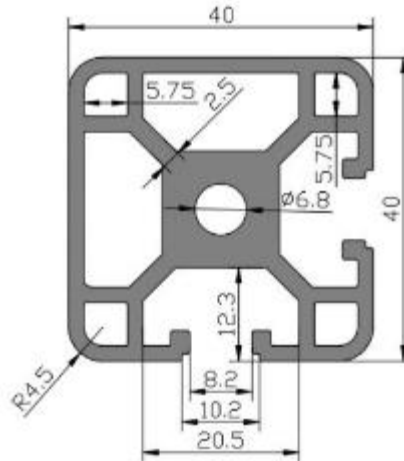
Material Aluminium (6063-T5)

Weight:1.9kg/m

Length: 6.01m

Mass of Inertia: lx:9.66cm⁴ ly:9.64cm⁴

Section Modulus: Zx:4.83cm³ Zy:4.82cm³



W-6-4040GA

Profile: 40 x40GA

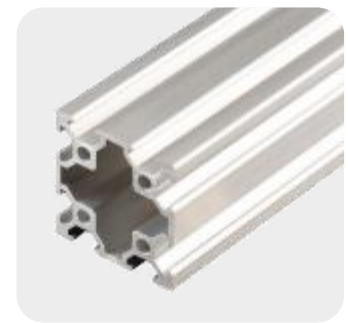
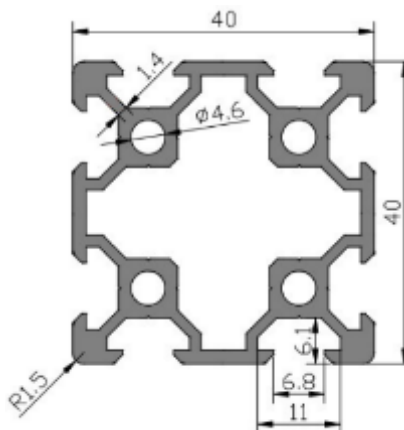
Material Aluminium (6063-T5)

Weight:1.9kg/m

Length: 6.01m

Mass of Inertia: lx:9.66cm⁴ ly:9.64cm⁴

Section Modulus: Zx:4.83cm³ Zy:4.82cm³



W-8-4060

Profile: 40 x60

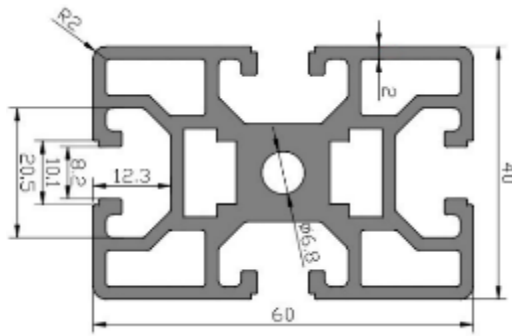
Material Aluminium (6063-T5)

Weight:3.05kg/m

Length: 6.01m

Mass of Inertia: Ix: 106.2cm⁴ Iy: 32.4cm⁴

Section Modulus: Zx: 30.6cm³ Zy: 15.3cm³



W-8-4080

Profile: 40 x80

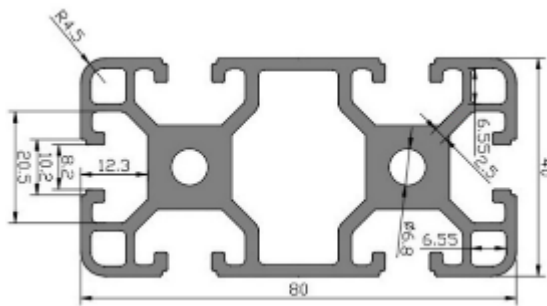
Material Aluminium (6063-T5)

Weight:3.5kg/m

Length: 6.01m

Mass of Inertia: Ix: 74.80cm⁴ Iy: 21.60cm⁴

Section Modulus: Zx: 17.40cm³ Zy: 8.70cm³



W-8-4080C

Profile: 40 x80C

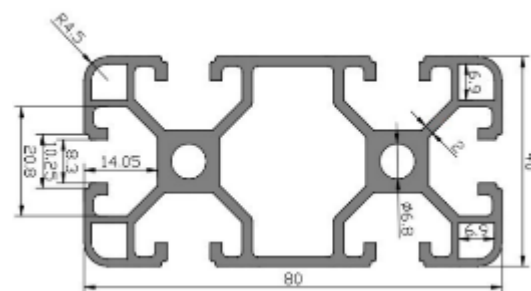
Material Aluminium (6063-T5)

Weight:2.85kg/m

Length: 6.01m

Mass of Inertia: Ix: 74.80cm⁴ Iy: 21.60cm⁴

Section Modulus: Zx: 17.40cm³ Zy: 8.70cm³



W-8-4080D

Profile: 40 x80D

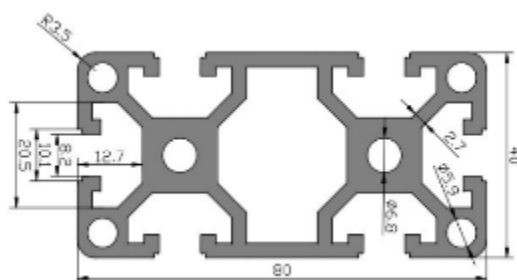
Material Aluminium (6063-T5)

Weight:3.9kg/m

Length: 6.01m

Mass of Inertia: Ix: 74.80cm⁴ Iy: 21.60cm⁴

Section Modulus: Zx: 17.40cm³ Zy: 8.70cm³



W-8-4080DR

Profile: 40 x80DR

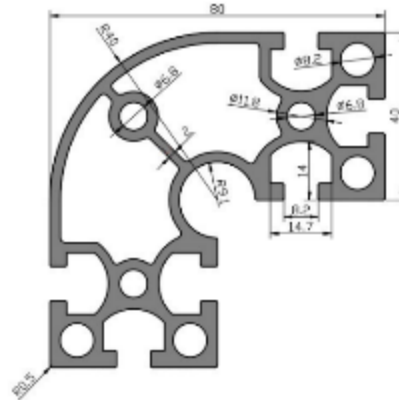
Material Aluminium (6063-T5)

Weight:4.55kg/m

Length: 6.01m

Mass of Inertia: lx:127.3cm⁴ ly:41.56cm⁴

Section Modulus: Zx:31.83cm³ Zy:20.78cm³



W-8-4080H

Profile: 40 x80H

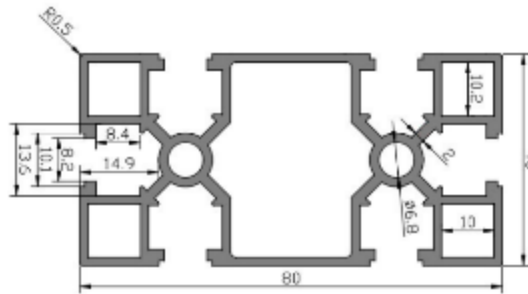
Material Aluminium (6063-T5)

Weight:2.6kg/m

Length: 6.01m

Mass of Inertia: lx: 10.20cm⁴ ly: 10.20cm⁴

Section Modulus: Zx: 5.32cm³ Zy: 5.32cm³



W-8-4080HD

Profile: 40 x80HD

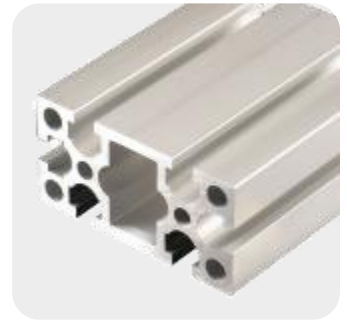
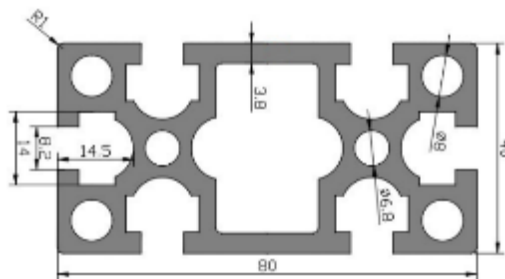
Material Aluminium (6063-T5)

Weight:4.04kg/m

Length: 6.01m

Mass of Inertia: lx: 80cm⁴ ly: 20.35cm⁴

Section Modulus: Zx: 19.2cm³ Zy: 9.6cm³



W-8-4080HE

Profile: 40 x80HE

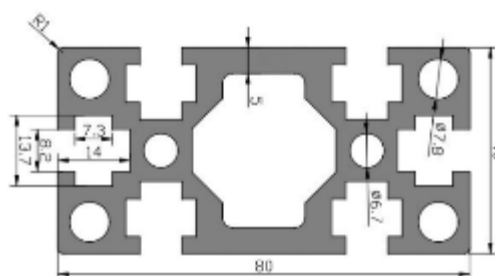
Material Aluminium (6063-T5)

Weight:4.2kg/m

Length: 6.01m

Mass of Inertia: lx: 80cm⁴ ly: 20.35cm⁴

Section Modulus: Zx: 19.2cm³ Zy: 9.6cm³



W-8-4080K

Profile: 40 x80K

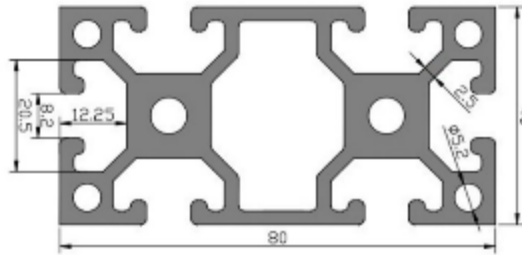
Material Aluminium (6063-T5)

Weight:4.05kg/m

Length: 6.01m

Mass of Inertia: Ix: 74.80cm⁴ Iy: 21.60cm⁴

Section Modulus: Zx: 17.40cm³ Zy: 8.70cm³



W-8-4080L

Profile: 40 x80L

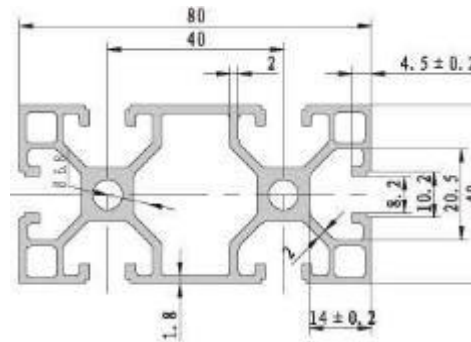
Material Aluminium (6063-T5)

Weight:3.0kg/m

Length: 6.01m

Mass of Inertia: Ix: 48.6cm⁴ Iy: 20.2cm⁴

Section Modulus: Zx: 14.6cm³ Zy: 7.3cm³



W-8-4080P

Profile: 40 x80P

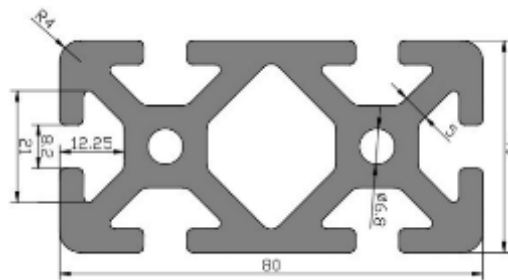
Material Aluminium (6063-T5)

Weight:5.43kg/m

Length: 6.01m

Mass of Inertia: Ix:100.54cm⁴ Iy:26.78cm⁴

Section Modulus: Zx:25.14cm³ Zy:13.39cm³



W-8-4080Q

Profile: 40 x80Q

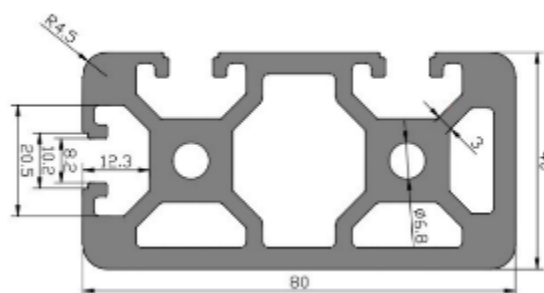
Material Aluminium (6063-T5)

Weight:5.43kg/m

Length: 6.01m

Mass of Inertia: Ix:100.54cm⁴ Iy:26.78cm⁴

Section Modulus: Zx:25.14cm³ Zy:13.39cm³



W-8-40120

Profile: 40 x120

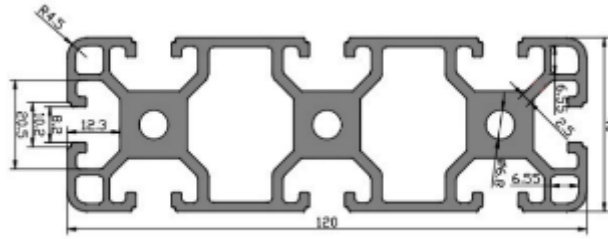
Material Aluminium (6063-T5)

Weight:4.9kg/m

Length: 6.01m

Mass of Inertia: Ix: 126.3cm⁴ Iy: 25.6cm⁴

Section Modulus: Zx: 32.4cm³ Zy: 10.8cm³



W-8-40160

Profile: 40 x160

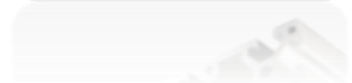
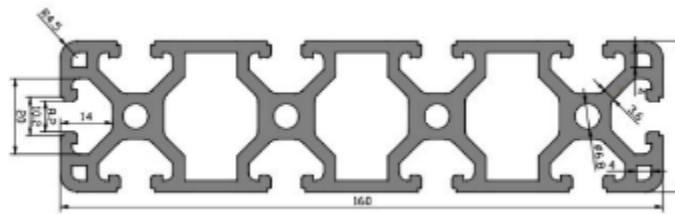
Material Aluminium (6063-T5)

Weight:7.2kg/m

Length: 6.01m

Mass of Inertia: Ix: 9.70cm⁴ Iy: 9.70cm⁴

Section Modulus: Zx: 5.10cm³ Zy: 5.10cm³



W-8-40160G

Profile: 40 x160G

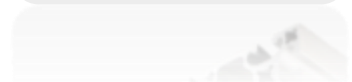
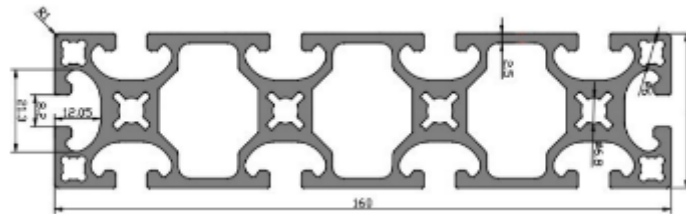
Material Aluminium (6063-T5)

Weight:6.8kg/m

Length: 6.01m

Mass of Inertia: Ix:502.42cm⁴ Iy:35.61cm⁴

Section Modulus: Zx:62.80cm³ Zy:17.81cm³



Chemical Composition

| Alloy | Si | Fe | Cu | Mn | Mg | Cr | Zn | Ti | Other | |
|-------|-----------|-----------|-----------|---------|-----------|-----------|-------|-------|--------|-------|
| | | | | | | | | | Single | Total |
| 6063 | 0.20~0.60 | ≤0.35 | ≤0.10 | ≤0.10 | 0.45~0.90 | ≤0.10 | ≤0.10 | ≤0.10 | ≤0.05 | ≤0.15 |
| 6063A | 0.30~0.60 | 0.15~0.35 | ≤0.10 | ≤0.15 | 0.60~0.90 | ≤0.05 | ≤0.15 | ≤0.10 | ≤0.05 | ≤0.15 |
| 6061 | 0.40~0.80 | 0.7 | 0.15~0.40 | ≤0.15 | 0.80~1.20 | 0.04~0.35 | 0.25 | 0.15 | 0.05 | 0.15 |
| 6082 | 0.70~1.30 | 0.5 | 0.1 | 0.4~1.0 | 0.6~1.2 | 0.25 | 0.2 | 0.1 | 0.05 | 0.15 |

Main Performance

| Item | | | Unit | Performance Data | | | | |
|--------------------|----------------------|--------------------|------|-------------------------|--------|------------------------|--------|--------|
| Alloy and State | | | | 6063T5 | 6063T6 | 6063AT5 | 6061T6 | 6082T6 |
| Tensile strength | | | Mp | 160 | 205 | 200 | 265 | 310 |
| Non proportional | | | Mp | 110 | 180 | 160 | 245 | 260 |
| Elongation | | | % | 8 | 8 | 5 | 8 | 10 |
| Hardness(Vickers) | | | HW | 8 | / | 10 | / | / |
| Anodizing | Oxide film | Grade | μm | Average film thickness | | Local film thickness | | |
| | | AA10 | | ≥10 | ≥8 | | | |
| | | AA15 | | ≥15 | ≥12 | | | |
| | | AA20 | | ≥20 | ≥16 | | | |
| | | AA25 | | ≥25 | ≥20 | | | |
| Closure quality | | Mg/dm ² | 30 | | | | | |
| electrophoresis | composite membrane | A | μm | ≥21 | | | | |
| | | B | | ≥16 | | | | |
| | Film Hardness | | H | ≥2 | | | | |
| adhesion | | | 0 | | | | | |
| Powder spraying | Coating thickness | | μm | Max film thickness ≤120 | | Min film thickness ≥40 | | |
| | Indentation hardness | | | ≥80 | | | | |
| | adhesion | | | 0 | | | | |