



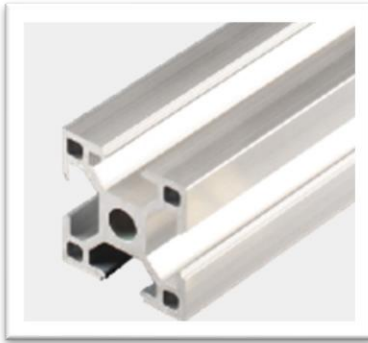
T Slot Aluminum Extrusion Frame Supplier



30 Series T-Slot Aluminum Extrusion Profile



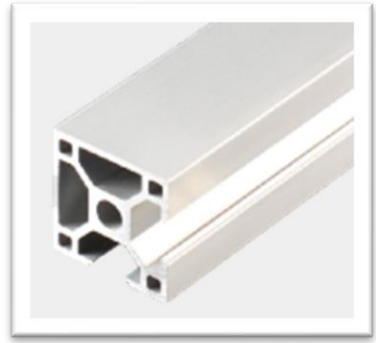
W-8-3030



W-8-3030A



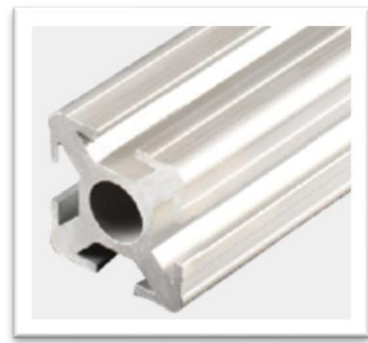
W-6-3030B



W-8-3030C



W-8-3030D



W-8-3030E



W-8-3030F



W-6-3030G



W-8-3030H



W-8-3030K



W-8-3030L



W-8-3030R



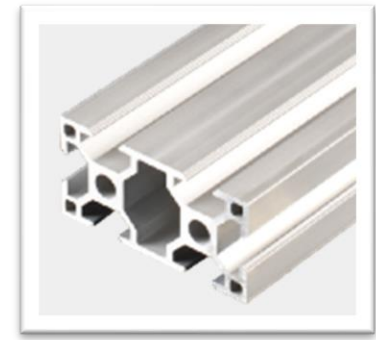
W-8-3030V



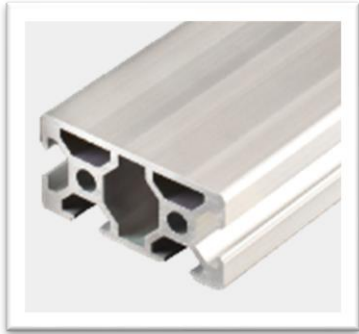
W-8-3030W



W-8-3060



W-8-3060A



W-8-3060B



W-6-3060C



W-8-3060DR



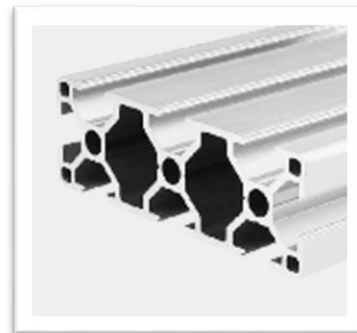
W-6-3060G



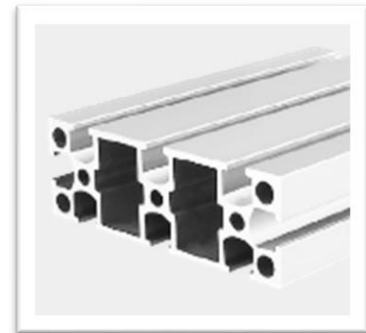
W-8-3060GA



W-8-3060L



W-8-3090



W-8-3090A



W-8-30120



W-8-30150

W-8-3030

Profile: 30x30

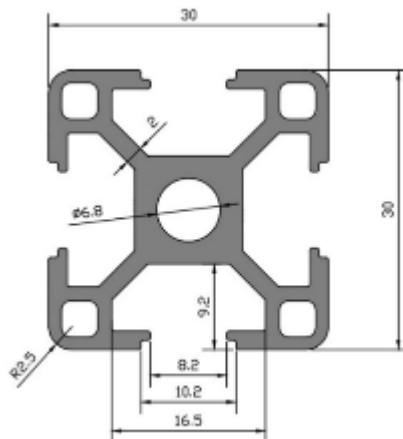
Material Aluminium (6063-T5)

Weight: 1.05kg/m

Length: 6.01m

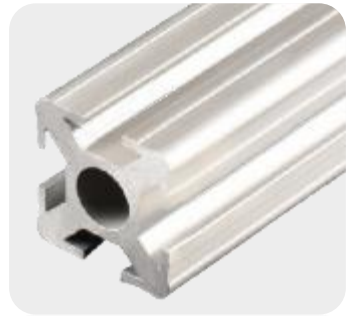
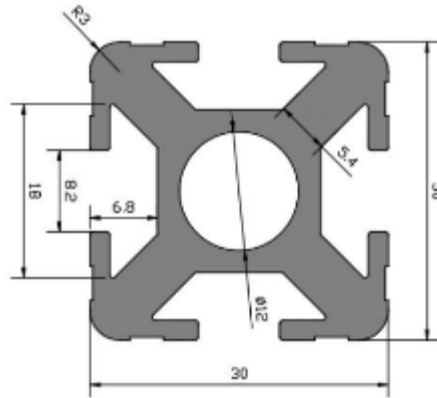
Mass of Inertia: Ix: 2.85cm⁴ Iy: 2.85cm⁴

Section Modulus: Zx: 1.8cm³ Zy: 1.8cm³



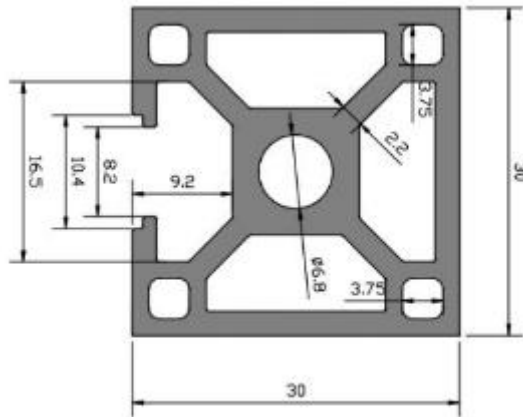
W-8-3030E

Profile: 30 x30E
 Material Aluminium (6063-T5)
 Weight: 1.5kg/m
 Length: 6.01m
 Mass of Inertia: Ix: 3.92cm⁴ Iy: 3.92cm⁴
 Section Modulus: Zx: 2.61cm³ Zy: 2.61cm³



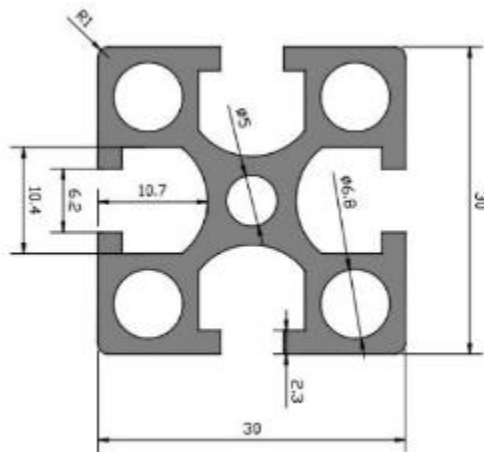
W-8-3030F

Profile: 30 x30F
 Material Aluminium (6063-T5)
 Weight: .3kg/m
 Length: 6.01m
 Mass of Inertia: Ix: 3.71cm⁴ Iy: 3.31cm⁴
 Section Modulus: Zx: 2.47cm³ Zy: 2.21cm³



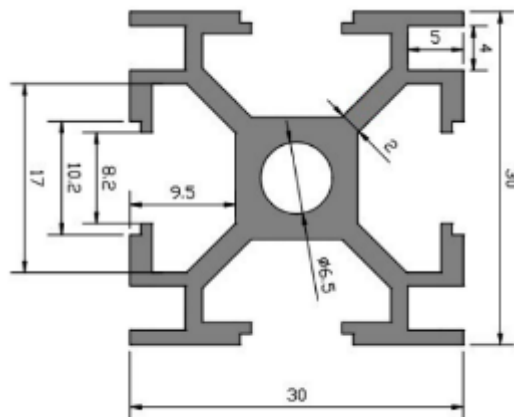
W-6-3030G

Profile: 30x30G
 Material: Aluminium (6063-T5)
 Weight: 1.2kg/m
 Length: 6.01 m
 Mass of Inertia: Ix: 3.05cm⁴ Iy: 3.05cm⁴
 Section Modulus: Zx: 2.4cm³ Zy: 2.4cm³



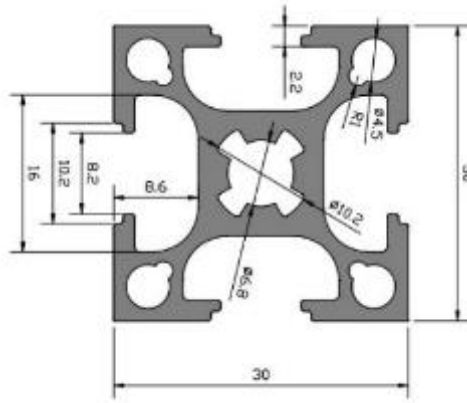
W-8-3030H

Profile: 30 x30H
 Material Aluminium (6063-T5)
 Weight: 1.1kg/m
 Length: 6.01m
 Mass of Inertia: Ix: 2.36cm⁴ Iy: 2.19cm⁴
 Section Modulus: Zx: 1.57cm³ Zy: 1.46cm³



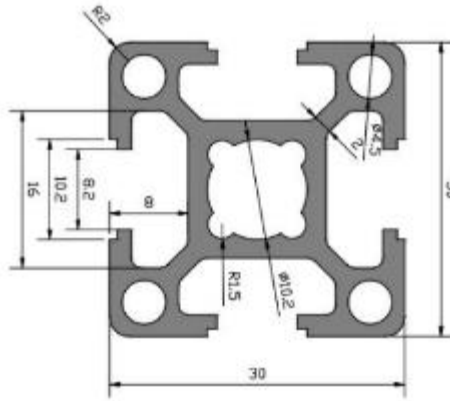
W-8-3030K

Profile: 30 x30K
 Material Aluminium (6063-T5)
 Weight: 1.04kg/m
 Length: 6.01m
 Mass of Inertia: Ix: 2.76cm⁴ Iy:2.76cm⁴
 Section Modulus: Zx: 1.84cm³ Zy:1.84cm³



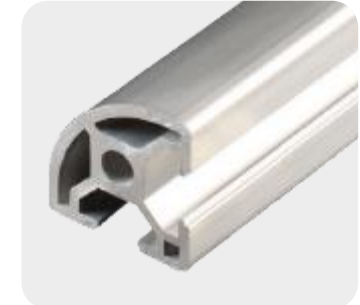
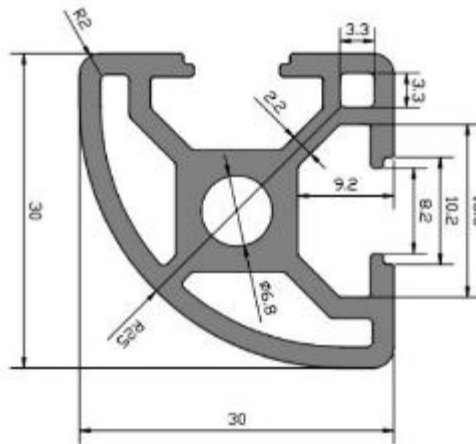
W-8-3030L

Profile: 30 x30L
 Material Aluminium (6063-T5)
 Weight: 1,03kg/m
 Length: 6.01m
 Mass of Inertia: Ix:2.84cm⁴ Iy:2.84cm⁴
 Section Modulus: Zx: 1.89cm³ Zy: 1.89cm³



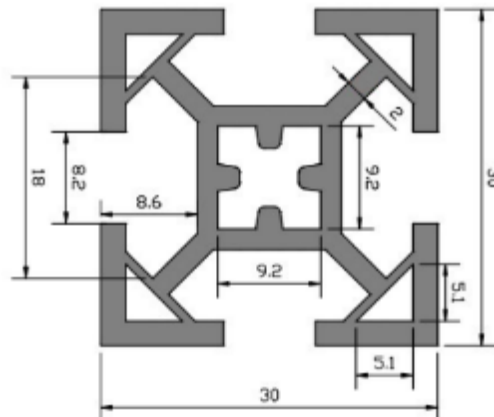
W-8-3030R

Profile: 30x30R
 Material Aluminium (6063-T5)
 Weight: 1.2kg/m
 Length: 6.01m
 Mass of Inertia: Ix: 2.52cm⁴ Iy: 2.52cm⁴
 Section Modulus: Zx: 1.51cm³ Zy: 1.51cm³



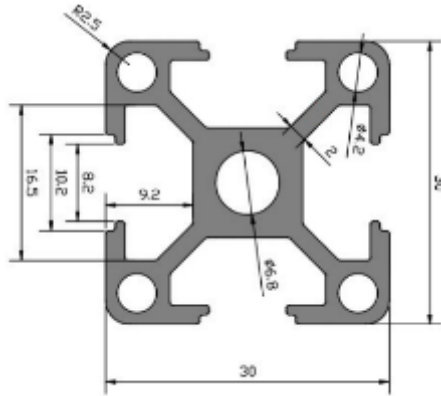
W-8-3030V

Profile: 30 x30V
 Material Aluminium (6063-T5)
 Weight: 1.1kg/m
 Length: 6.01m
 Mass of Inertia: Ix: 3.15cm⁴ Iy:3.15cm⁴
 Section Modulus: Zx:2.10cm³ Zy:2.10cm³



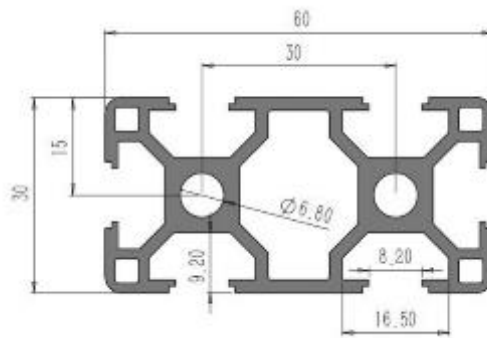
W-8-3030W

Profile: 30 X30W
 Material Aluminium (6063-T5)
 Weight: 1.2kg/m
 Length: 6.01m
 Mass of Inertia: Ix: 3.35cm⁴ Iy: 3.35cm⁴
 Section Modulus: Zx: 2.28cm³ Zy: 2.28cm³



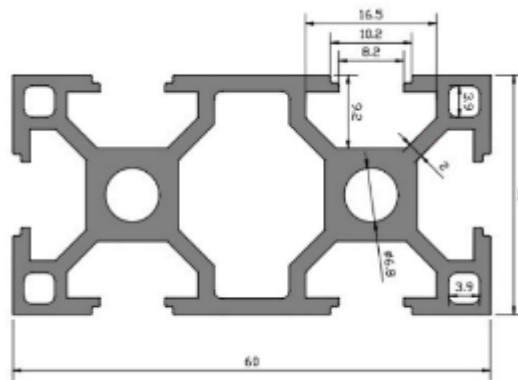
W-8-3060

Profile: 30x60
 Material Aluminium (6063-T5)
 Weight: 1.85kg/m
 Length: 6.01 m
 Mass of Inertia: Ix: 19.8cm⁴ Iy: 5.15cm⁴
 Section Modulus: Zx: 6.60cm³ Zy: 3.30cm³



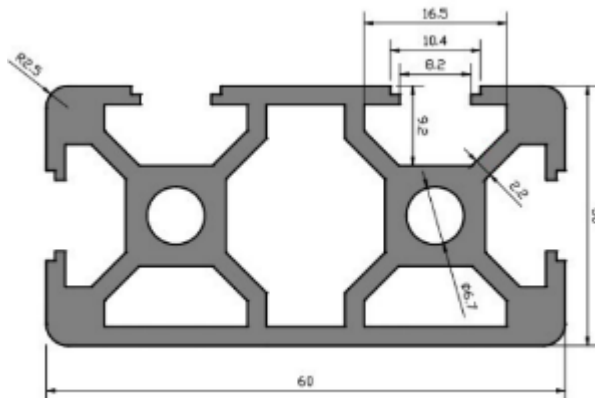
W-8-3060A

Profile: 30X60A
 Material Aluminium (6063-T5)
 Weight: 1.85kg/m
 Length: 6.01 m
 Mass of Inertia: Ix: 19.8cm⁴ Iy: 5.15cm⁴
 Section Modulus: Zx: 6.60cm³ Zy: 3.30cm³



W-8-3060B

Profile: 30x60B
 Material Aluminium (6063-T5)
 Weight: 2.3kg/m
 Length: 6.01 m
 Mass of Inertia: Ix: 19.8cm⁴ Iy: 5.15cm⁴
 Section Modulus Zx: 6.60cm³ Zy: 3.30cm³



Chemical Composition

Alloy	Si	Fe	Cu	Mn	Mg	Cr	Zn	Ti	Other	
									Single	Total
6063	0.20~0.60	≤0.35	≤0.10	≤0.10	0.45~0.90	≤0.10	≤0.10	≤0.10	≤0.05	≤0.15
6063A	0.30~0.60	0.15~0.35	≤0.10	≤0.15	0.60~0.90	≤0.05	≤0.15	≤0.10	≤0.05	≤0.15
6061	0.40~0.80	0.7	0.15~0.40	≤0.15	0.80~1.20	0.04~0.35	0.25	0.15	0.05	0.15
6082	0.70~1.30	0.5	0.1	0.4~1.0	0.6~1.2	0.25	0.2	0.1	0.05	0.15

Main Performance

Item		Unit	Performance Data					
Alloy and State			6063T5	6063T6	6063AT5	6061T6	6082T6	
		Not Less Than						
Tensile strength		Mp	160	205	200	265	310	
Non proportional		Mp	110	180	160	245	260	
Elongation		%	8	8	5	8	10	
Hardness(Vickers)		HW	8	/	10	/	/	
Anodizing	Oxide film	Grade	Average film thickness		Local film thickness			
		AA10	≥10		≥8			
		AA15	≥15		≥12			
		AA20	≥20		≥16			
	AA25	≥25		≥20				
Closure quality		Mg/dm ²	30					
electrophoresis	composite membrane	A	≥21					
		B	≥16					
	Film Hardness		H	≥2				
adhesion			0					
Powder spraying	Coating thickness		μm	Max film thickness ≤120		Min film thickness ≥40		
	Indentation hardness			≥80				
	adhesion			0				