



WELLSTE

- Aluminum Cylinder Tube -

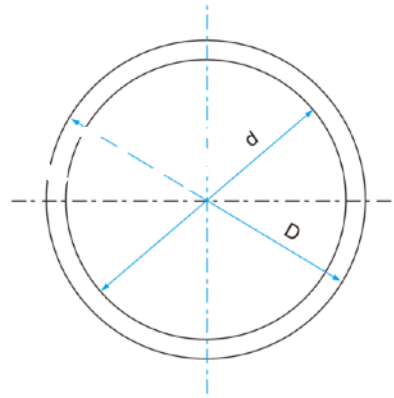
**Aluminium  
Cylinder Tube  
Manufacturer  
China**



# Aluminum Cylinder Tube

All dimensions are metric  
Tolerance according to ISO

**S001**



## MAJOR PARAMETERS

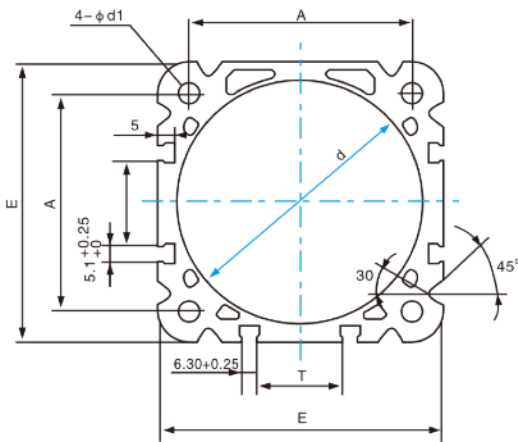
d	D	WT	d	D	WT	d	D	WT
Φ16	Φ20	2	Φ63	Φ68	2.5	Φ101.6	Φ107.6	3
Φ20	Φ25	2.5	Φ63	Φ69	3	Φ105	Φ110	2.5
Φ20	Φ26	3	Φ63	Φ70	3.5	Φ108	Φ114.2	3.1
Φ25	Φ29	2	Φ63	Φ71	4	Φ110	Φ116	3
Φ25	Φ30	2.5	Φ63	Φ72	4.5	Φ125	Φ132	3.5
Φ30	Φ35	2.5	Φ70	Φ74	2	Φ125	Φ133	4
Φ32	Φ36	2	Φ70	Φ75	2.5	Φ125	Φ135	5
Φ32	Φ37	2.5	Φ70	Φ76	3	Φ127	Φ136	4.5
Φ32	Φ39	3.5	Φ75	Φ80	2.5	Φ130	Φ140	5
Φ35	Φ40	2.5	Φ76.2	Φ82.2	3	Φ140	Φ150	5
Φ38.1	Φ43	2.45	Φ80	Φ85	2.5	Φ150	Φ160	5
Φ40	Φ44	2	Φ80	Φ86	3	Φ152.4	Φ162.4	5
Φ40	Φ45	2.5	Φ80	Φ87	3.5	Φ160	Φ167	3.5
Φ40	Φ48	4	Φ80	Φ89	4.5	Φ160	Φ170	5
Φ40	Φ50	5	Φ88.9	Φ94.9	3	Φ180	Φ190	5
Φ45	Φ50	2.5	Φ90	Φ95	2.5	Φ185	Φ192.4	3.7
Φ50	Φ54	2	Φ90	Φ97	3.5	Φ186	Φ195	4.5
Φ50	Φ55	2.5	Φ95	Φ99	2	Φ200	Φ210	5
Φ50	Φ58	4	Φ95	Φ100	2.5	Φ203.2	Φ215.9	6.35
Φ50	Φ65.3	7.65	Φ100	Φ105	2.5	Φ214	Φ224	5
Φ50.8	Φ55.8	2.5	Φ100	Φ106	3	Φ250	Φ262	6
Φ56	Φ60	2	Φ100	Φ107	3.5	Φ254	Φ263.5	4.75
Φ57.15	Φ62	2.425	Φ100	Φ108	4	Φ300	Φ312	6
Φ57.8	Φ62.5	2.35	Φ100	Φ110	5	Φ320	Φ336	8

🔍 Our catalog only list partial and reach us get more

# Aluminum Cylinder Tube

All dimensions are metric  
Tolerance according to ISO

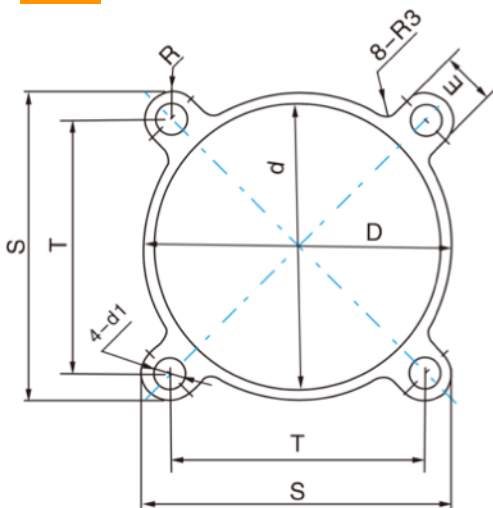
## S002



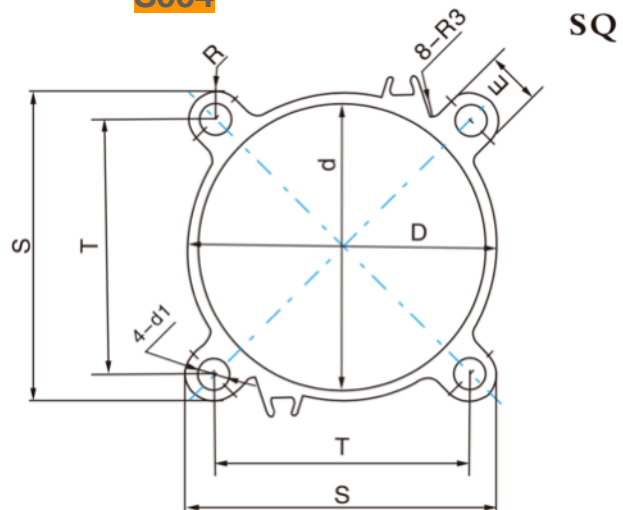
## MAJOR PARAMETERS

No.	D	E	A	T	4- $\Phi d1$
1	$\Phi 32$	44 x 44	32.5 x 32.5	8.2	$\Phi 5.1$
2	$\Phi 40$	51 x 51	38 x 38	11	$\Phi 5.1$
3	$\Phi 50$	64 x 64	46.5 x 46.5	17	$\Phi 6.7$
4	$\Phi 63$	75 x 75	56.5 x 56.5	26	$\Phi 6.7$
5	$\Phi 80$	93 x 93	72 x 72	28	$\Phi 8.7$
6	$\Phi 100$	111 x 111	89 x 89	35	$\Phi 8.7$
7	$\Phi 125$	134 x 134	110 x 110	55	$\Phi 10.3$

## S003



## S004



SQ

## MAJOR PARAMETERS

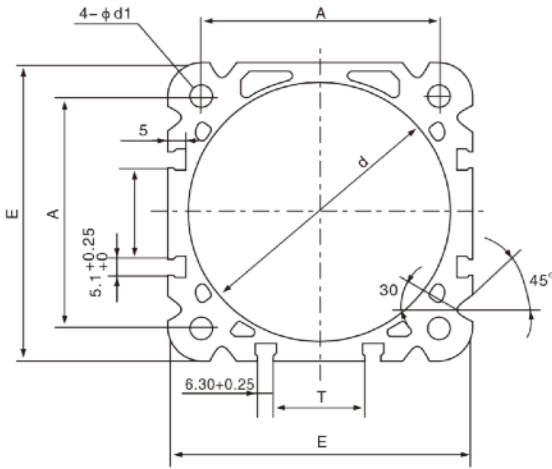
No.	d	D	T	S	E	4-d1
1	$\Phi 32$	$\Phi 36.5$	32.5 x 32.5	42.5 x 42.5	10	$\Phi 5.2$
2	$\Phi 40$	$\Phi 44.5$	38 x 38	48 x 48	10	$\Phi 5.2$
3	$\Phi 50$	$\Phi 55.3$	46.5 x 46.5	58.5 x 58.5	12	$\Phi 6.8$
4	$\Phi 63$	$\Phi 68$	56.5 x 56.5	70 x 70	12	$\Phi 6.8$
5	$\Phi 80$	$\Phi 85.8$	72 x 72	87.5 x 87.5	14	$\Phi 8.7$
6	$\Phi 100$	$\Phi 106$	89 x 89	107 x 107	15	$\Phi 8.7$
7	$\Phi 125$	$\Phi 132.5$	110 x 110	133 x 133	18.5	$\Phi 10.5$

☑ Our catalog only list partial and reach us get more

# Aluminum Cylinder Tube

All dimensions are metric  
Tolerance according to ISO

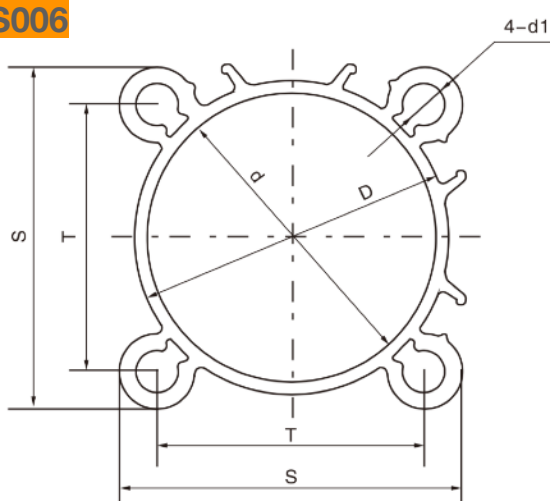
## S010



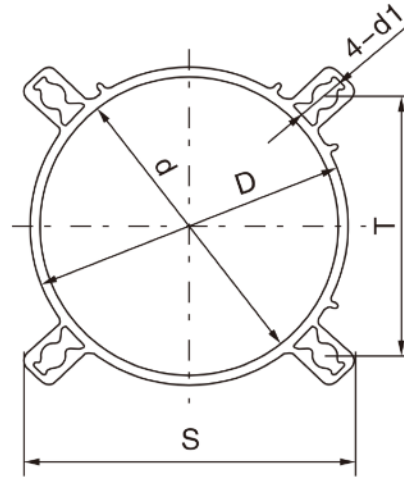
## MAJOR PARAMETERS

No.	D	E	A	T	4-φd1
1	Φ32	43.5 x 43.5	33 x 33	8.4	Φ5.5
2	Φ40	50 x 50	37 x 37	10.9	Φ5.5
3	Φ50	61 x 61	47 x 47	17	Φ5.5
4	Φ63	74 x 74	56 x 56	25.5	Φ7.4
5	Φ80	93 x 93	70 x 70	27.9	Φ9.3
6	Φ100	111 x 111	84 x 84	35	Φ9.3

## S006



φ 32-100



125

## MAJOR PARAMETERS

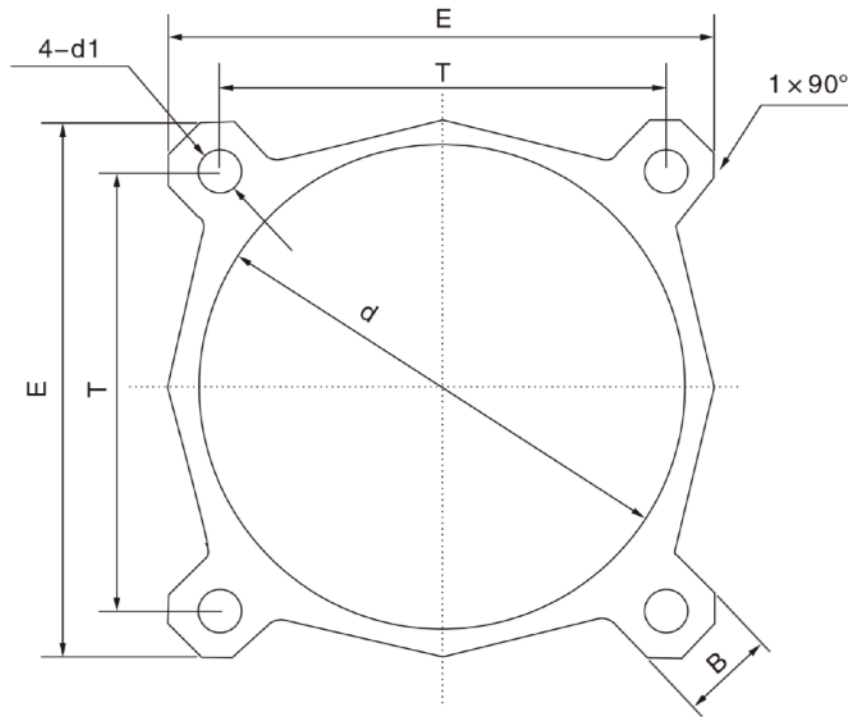
No.	d	D	S	T	4-d1
1	Φ32	Φ36	42.5 x 42.5	32.5 x 32.5	Φ5.4
2	Φ40	Φ46	49.64 x 49.64	38 x 38	Φ5.4
3	Φ50	Φ54.4	59.75 x 59.75	46.5 x 46.5	Φ7.4
4	Φ63	Φ67.7	69.5 x 69.5	56.5 x 56.5	Φ7.4
5	Φ80	Φ85.5	86 x 86	72 x 72	Φ9.1
6	Φ100	Φ105.5	105.5 x 105.5	89 x 89	Φ9.1
7	Φ125	Φ131	131 x 131	110 x 110	Φ10.6

🔗 Our catalog only list partial and reach us get more

# Aluminum Cylinder Tube

All dimensions are metric  
Tolerance according to ISO

S008



## MAJOR PARAMETERS

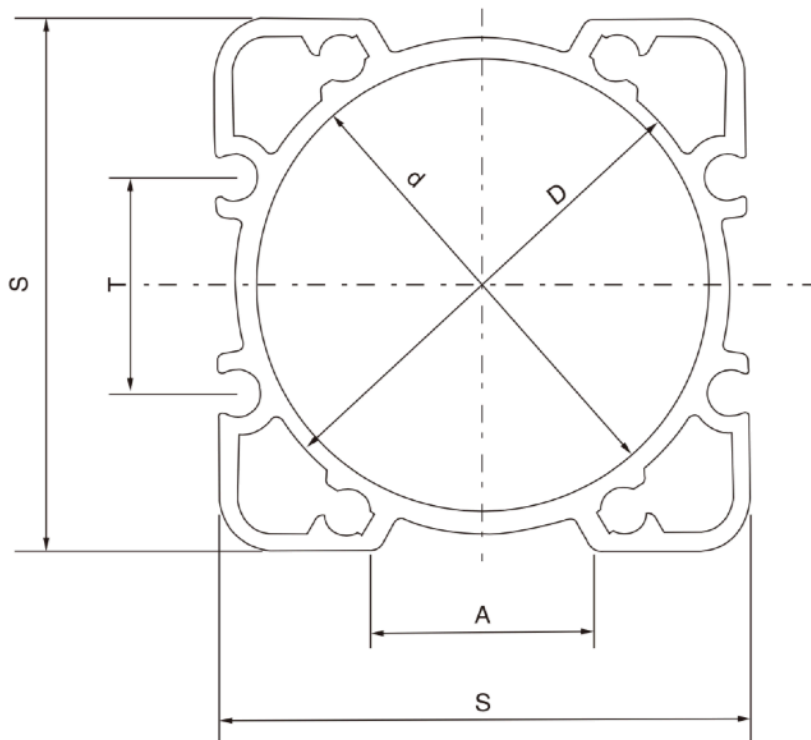
No.	d	E	T	B	4-d1
1	Φ32	43.5 x 43.5	32.5 x 32.5	11	Φ5.5
2	Φ40	49 x 49	38 x 38	10.9	Φ5.5
3	Φ50	60.5 x 60.5	46.5 x 46.5	14	Φ7.5
4	Φ63	70.5 x 70.5	56.5 x 56.5	14.15	Φ7.5
5	Φ80	90 x 90	72 x 72	18	Φ9.4
6	Φ100	107 x 107	89 x 89	18	Φ9.4
7	Φ125	135 x 135	110 x 110	20	Φ11.2
8	Φ160	176 x 176	140 x 140	26	Φ16.5
9	Φ200	214.5 x 214.5	175 x 175	26	Φ16.5

👉 Our catalog only list partial and reach us get more

# Aluminum Cylinder Tube

All dimensions are metric  
Tolerance according to ISO

S009



## MAJOR PARAMETERS

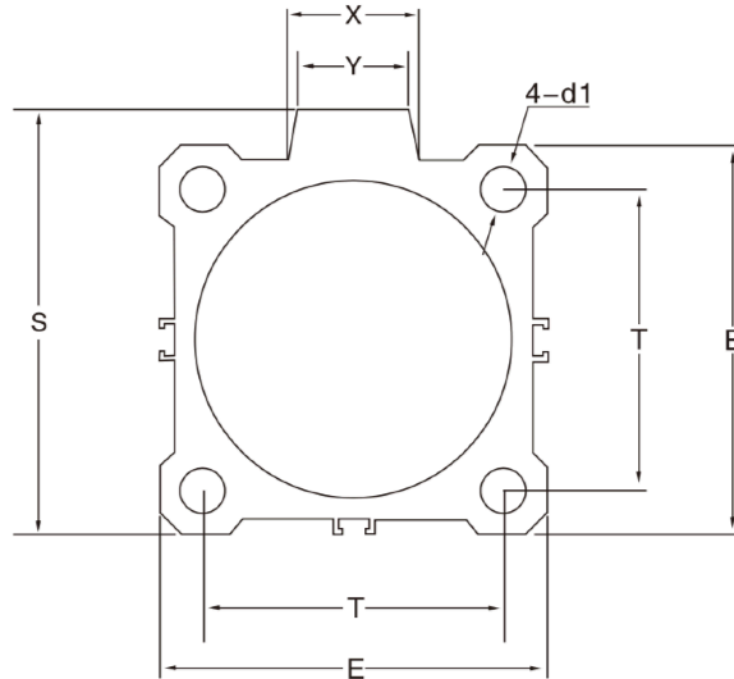
No.	d	D	S	A	T
1	Φ32	36	45 x 45	15	15
2	Φ40	44.6	52 x 52	15	21.9
3	Φ50	56	64 x 64	19.5	19
4	Φ63	69	74 x 74	30	30
5	Φ80	87	94 x 94	36	28
6	Φ100	108	115 x 115	48	30
7	Φ125	134.2	138 x 138	62.5	46

🔗 Our catalog only list partial and reach us get more

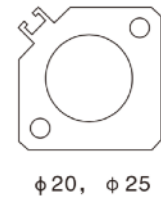
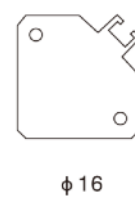
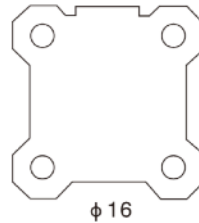
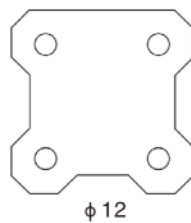
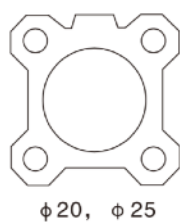
# Aluminum Cylinder Tube

All dimensions are metric  
Tolerance according to ISO

**S012**



φ 32- φ 125



## MAJOR PARAMETERS

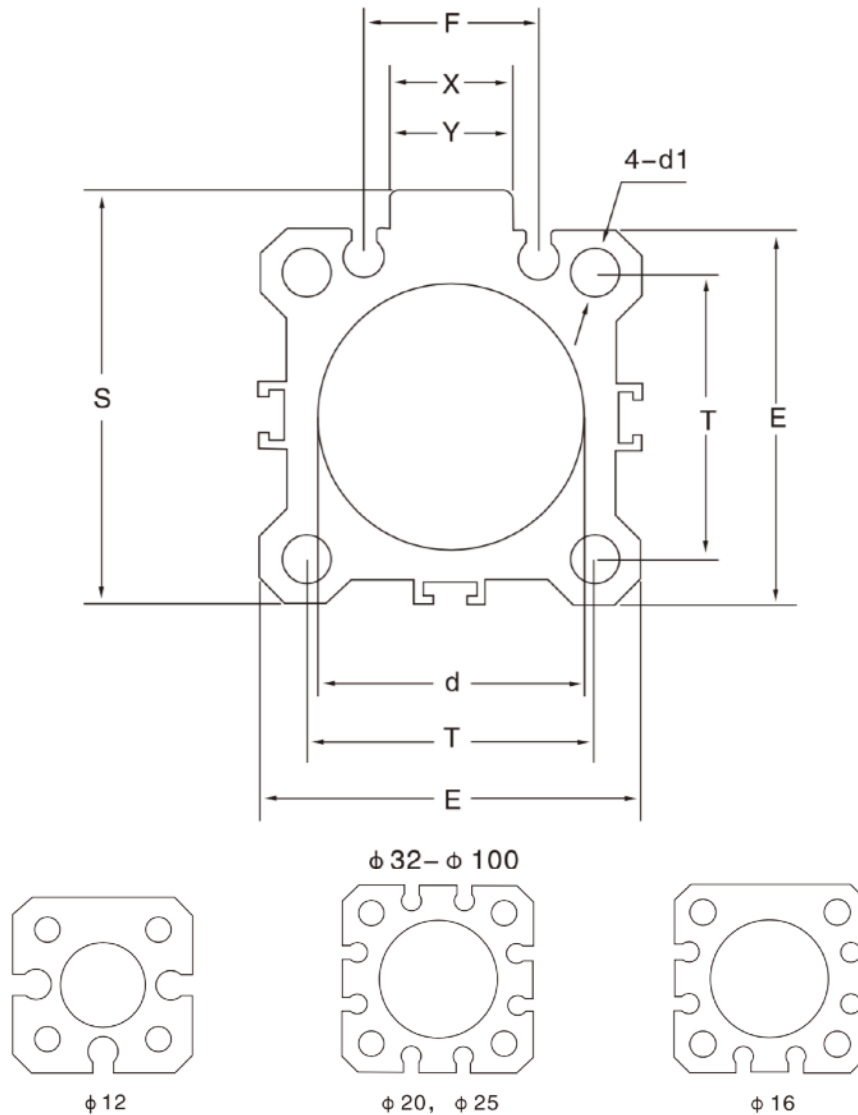
No.	d	S	E	T	4-d1	X	Y
1	12	-	25 x 25	15.5 x 15.5	3.2	-	-
2	16	-	29 x 29	20 x 20	3.5	-	-
3	20	36.4	36.4 x 36.4	25.5 x 25.5	5.5	11	10
4	25	42	40 x 40	28 x 28	5.5	11	10
5	32	49.5	45 x 45	34 x 34	5.5	20	18
6	40	57	52 x 52	40 x 40	5.5	21	18
7	50	71	64 x 64	50 x 50	6.6	26	22
8	63	84	77 x 77	60 x 60	9	26	22
9	80	104	98 x 98	77 x 77	11	29.5	26
10	100	123.5	117 x 117	94 x 94	11	37.5	26
11	125	153	142 x 142	114 x 114	13	37.5	32

🔍 Our catalog only list partial and reach us get more

# Aluminum Cylinder Tube

All dimensions are metric  
Tolerance according to ISO

**S013**



## MAJOR PARAMETERS

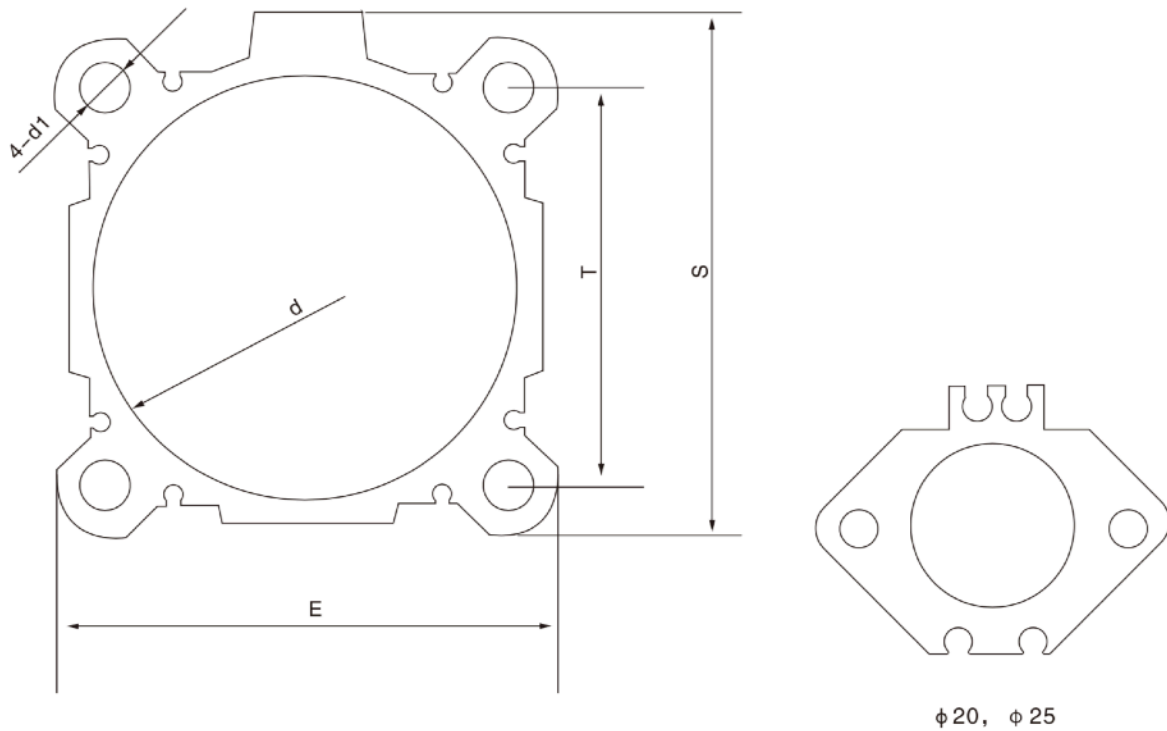
No.	d	E	T	F	4-d1	Y	X
1	16	29 x 29	20 x 20	7 x 7	3.6	-	-
2	20	35.6 x 35.6	25.2 x 25.2	11 x 11	4.8	-	-
3	25	40 x 40	28 x 28	11 x 11	5.5	-	-
4	32	45 x 45	34 x 34	20.6	5.5	13.9	14.8
5	40	52 x 52	40 x 40	22	5.5	16	23.5
6	50	64 x 64	50 x 50	26	6.6	18	20
7	63	77 x 77	60 x 60	38	9	19	21
8	80	98 x 98	77 x 77	60	11	26	37.5
9	100	117 x 117	94 x 94	61.5	11	26	37.5

🔍 Our catalog only list partial and reach us get more

# Aluminum Cylinder Tube

All dimensions are metric  
Tolerance according to ISO

**S014**



## MAJOR PARAMETERS

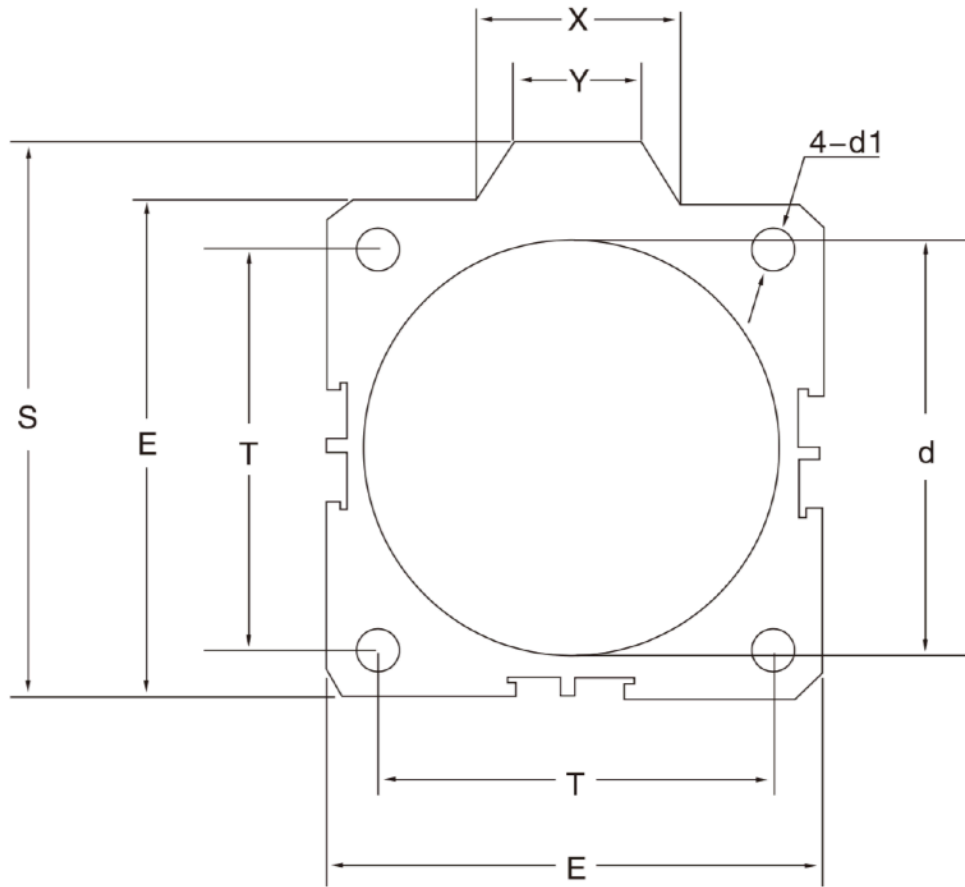
No.	d	T	E	S	4-d1
1	32	34	45	48	5.6
2	40	40	52	57	5.6
3	50	50	64	71	6.6
4	63	60	77	84	9
5	80	77	98	104.5	11
6	100	94	117	123.5	11

👉 Our catalog only list partial and reach us get more

# Aluminum Cylinder Tube

All dimensions are metric  
Tolerance according to ISO

**S015**



## MAJOR PARAMETERS

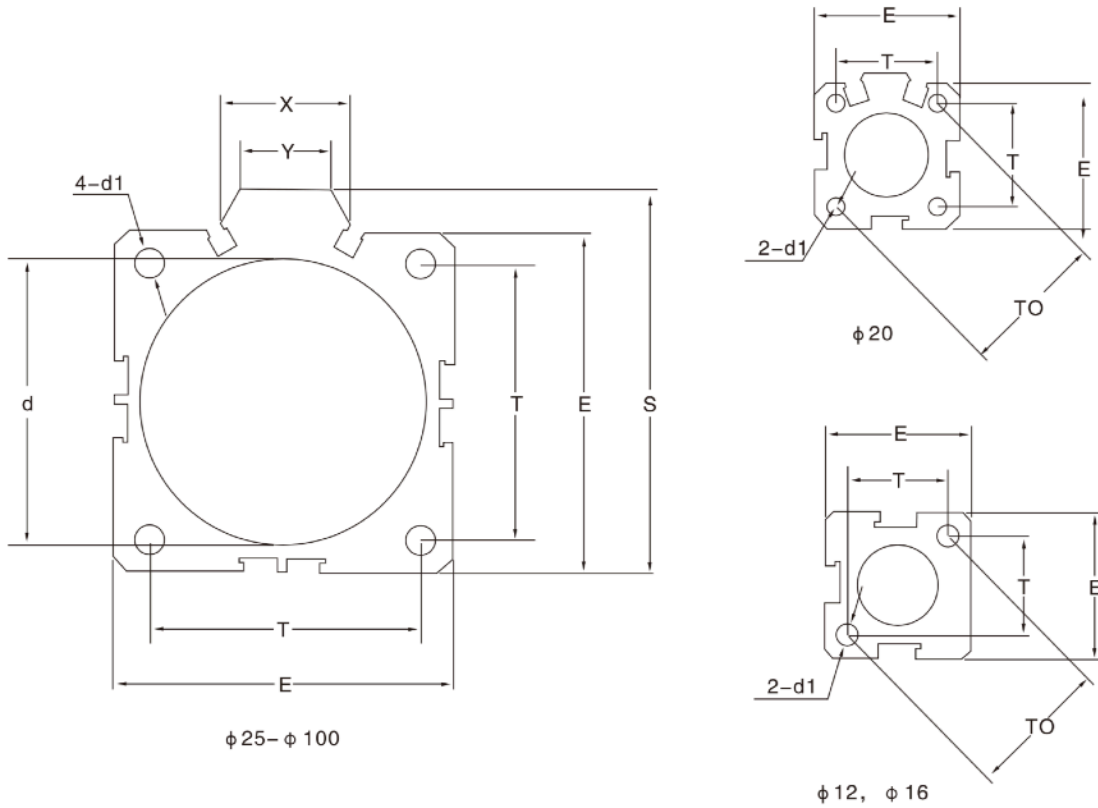
No.	d	E	S	T	4-d1	Y	X
1	12	25 x 25	-	16.2 x 16.2	3.5	-	-
2	16	29 x 29	-	19.8 x 19.8	3.5	-	-
3	20	34 x 34	36	24 x 24	3.5	10	12.3
4	25	40 x 40	42	28 x 28	4.6	10	12.3
5	32	44 x 44	50	34 x 34	4.6	16	22.9
6	40	52 x 52	58.5	40 x 40	5.7	16	23.5
7	50	62 x 62	71.5	48 x 48	6.8	20	31
8	63	75 x 75	84.5	60 x 60	6.8	20	31
9	80	94 x 94	104	74 x 74	9.2	26	37.5
10	100	114 x 114	124	90 x 90	11	26	37.5

🔍 Our catalog only list partial and reach us get more

# Aluminum Cylinder Tube

All dimensions are metric  
Tolerance according to ISO

**S016**



## MAJOR PARAMETERS

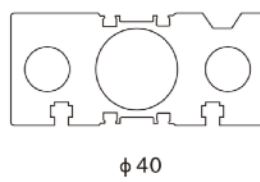
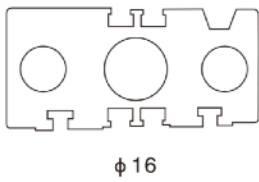
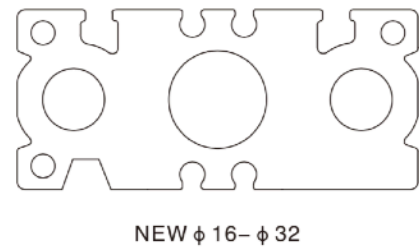
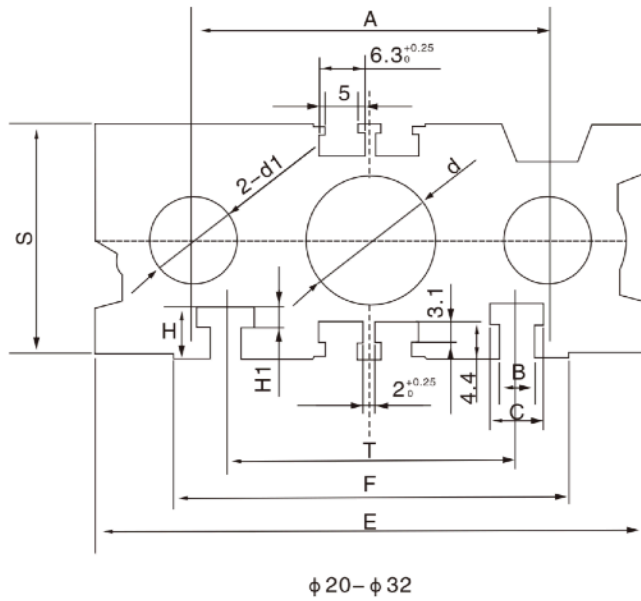
No.	d	E	S	T	4-d1	Y	X
1	12	25 x 25	-	23	4.2	-	-
2	16	29 x 29	-	28	4.2	-	-
3	20	34 x 34	36	24 x 24	4.2	10	11.3
4	25	40 x 40	42	28 x 28	4.6	10	12
5	32	44 x 44	50	34 x 34	4.6	15	18.3
6	40	52 x 52	58.5	40 x 40	6.5	16	21.3
7	50	62 x 62	71.5	48 x 48	6.5	20	30
8	63	75 x 75	84.5	60 x 60	6.5	20	28.7
9	80	94 x 94	104	74 x 74	9.2	26	36
10	100	114 x 114	124	90 x 90	11.3	26	35

🔍 Our catalog only list partial and reach us get more

# Aluminum Cylinder Tube

All dimensions are metric  
Tolerance according to ISO

**S019**



## MAJOR PARAMETERS

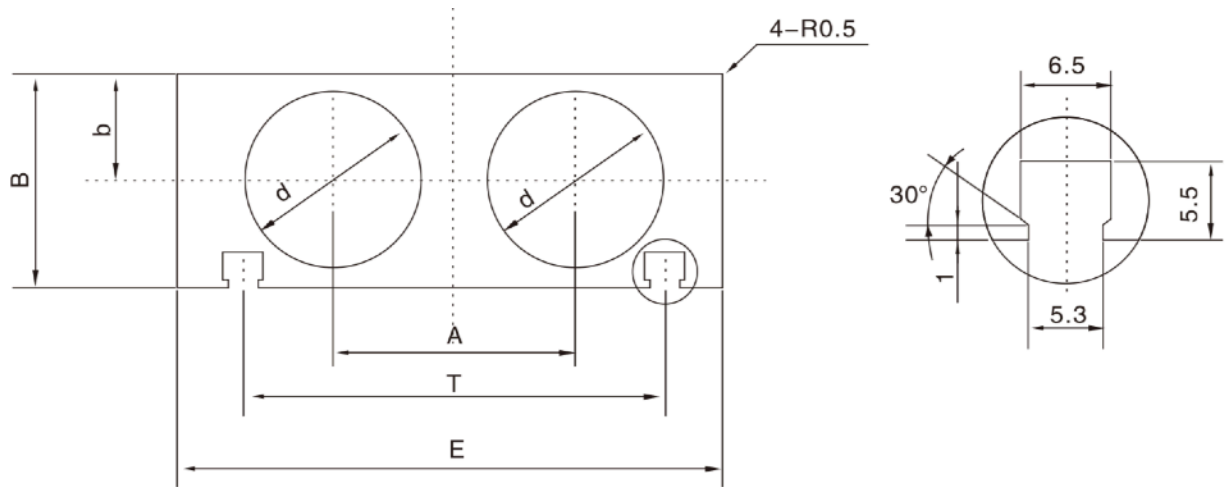
No.	d	2-d1	E	F	T	S	H	H1	A	B	C
1	$\Phi 16$	$\Phi 11$	64	50	38	30.2	4.8	2	46	3.7	6.2
2	$\Phi 20$	$\Phi 13.5$	83	60	44	36.2	7.8	3.5	54	5.5	8.5
3	$\Phi 25$	$\Phi 17.5$	93	68	54	42	8	3.5	64	5.5	8.5
4	$\Phi 32$	$\Phi 21$	112	75	63	48	8	4	78	6.5	10.2
5	$\Phi 40$	$\Phi 21.5$	120	91.5	72	54	9.5	5.5	86	6.5	10.5

✔ Our catalog only list partial and reach us get more

# Aluminum Cylinder Tube

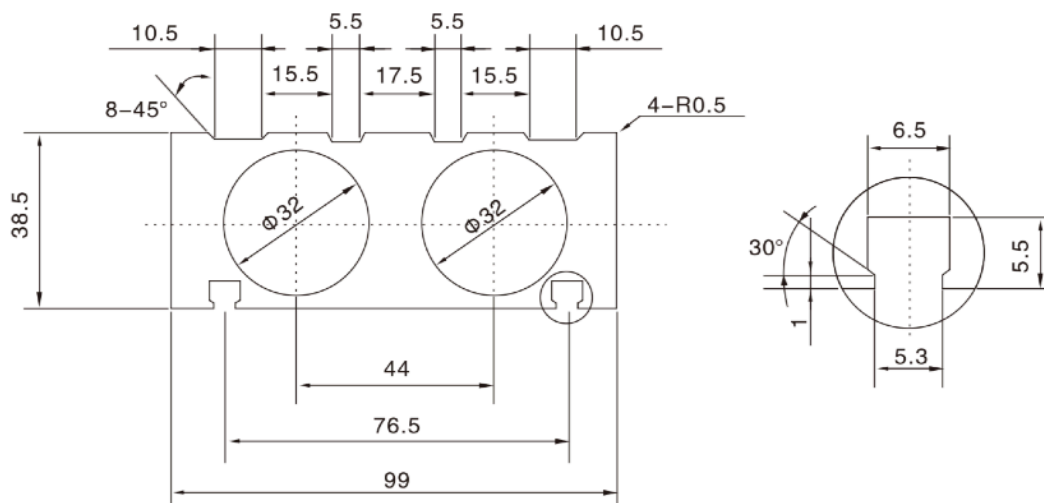
All dimensions are metric  
Tolerance according to ISO

**S020**



## MAJOR PARAMETERS

No.	d	E	A	T	B	b
1	Φ10	46.3	20	36	17.3	7
2	Φ15	59	25	48.5	20.5	10.5
3	Φ20	65	28	53.5	25.5	12.75
4	Φ25	81	35	65.5	30.5	15.25
5	Φ32	99	44	76.5	38.5	19.25

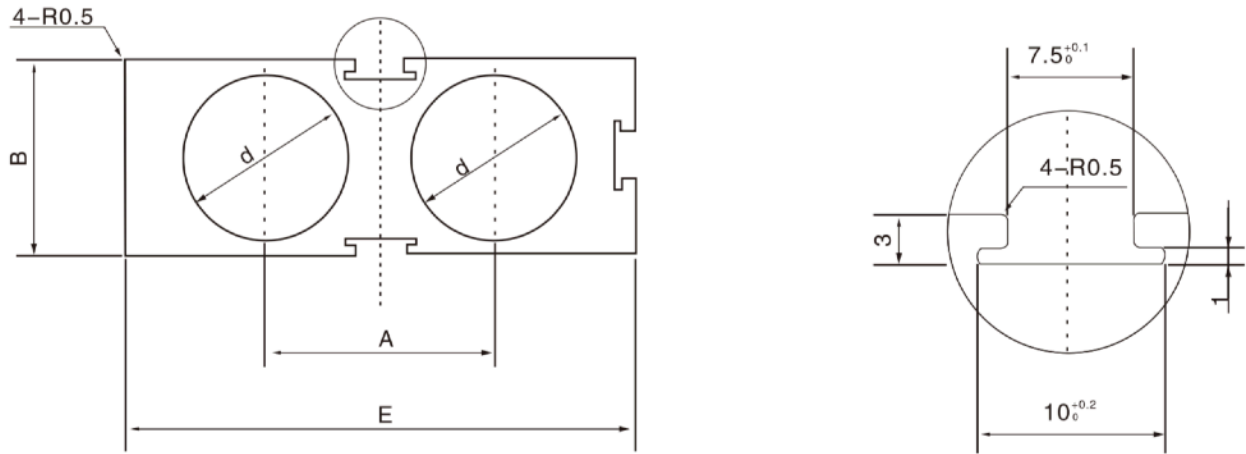


Our catalog only list partial and reach us get more

# Aluminum Cylinder Tube

All dimensions are metric  
Tolerance according to ISO

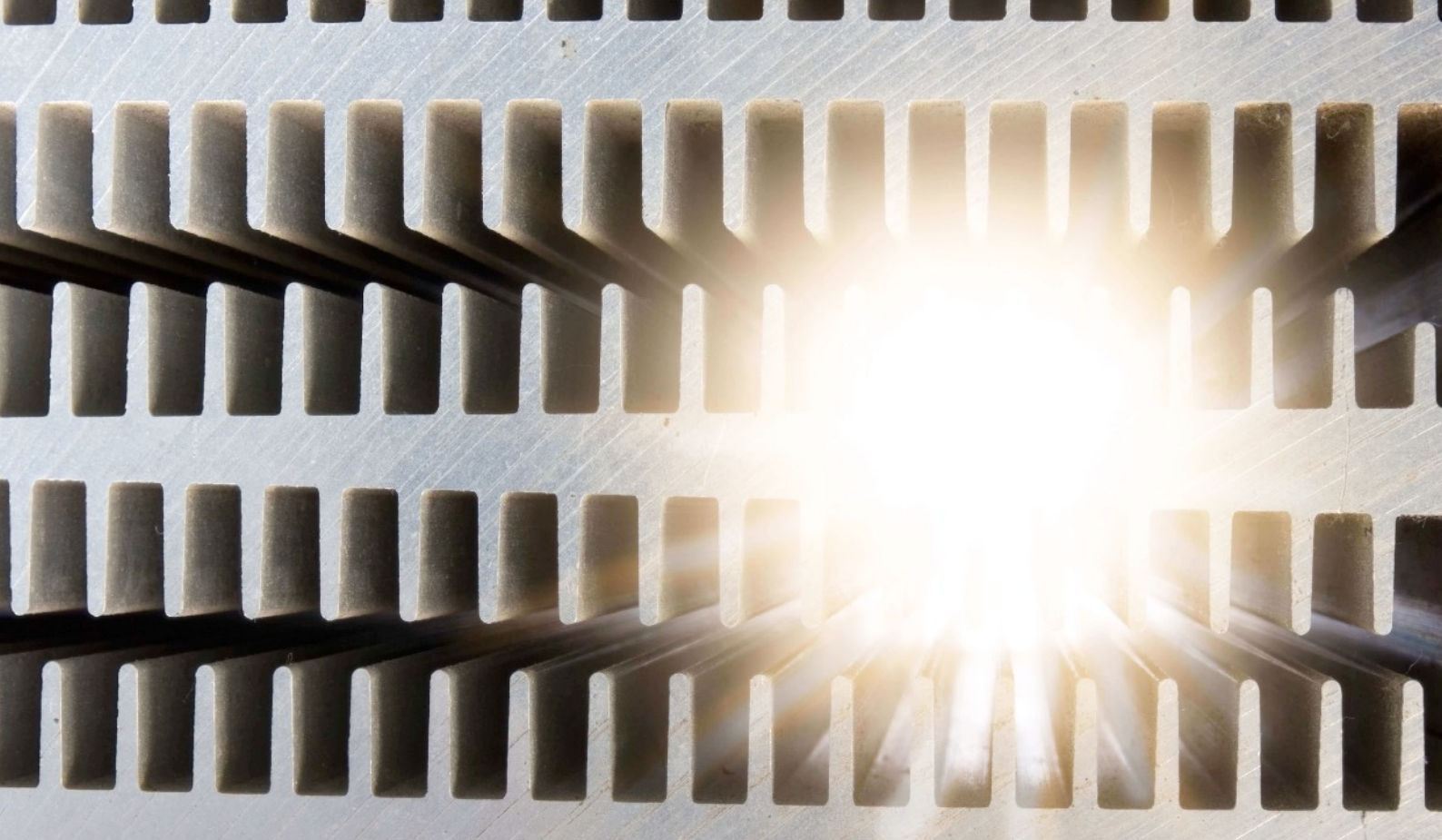
**S021**



## MAJOR PARAMETERS

No.	D	E	A	B
1	Φ10	42	18	17
2	Φ15	54	24	21
3	Φ20	62	28	25
4	Φ25	73	34	30
5	Φ32	96	42	40

✔ Our catalog only list partial and reach us get more



## Contact us

Email: [sales@wellste.com](mailto:sales@wellste.com)

Website: [www.wellste.com](http://www.wellste.com)

Phone: 86-511-83331185

Address: 3FL., No.98, Zongze Rd.,  
Jingkou, Zhenjiang, Jiangsu, China

**Whatever order or not, Let's take some time to discuss.**